

GPS-COMBI MOUNT 3.5-7.5 mm

GPS mount for GPS Antennas
for Other Frequencies

PROCOM



DESCRIPTION:

- ★ GPS-antenna for fixed installations.
- ★ Special mount for roof thickness 3.5-7.5 mm.
- ★ External antenna whip mounted on the GPS-Combi mount.
- ★ Full hemispherical coverage.
- ★ Built-in high gain, low noise amplifier.
- ★ Right-Hand Circular Polarisation (RHCP).
- ★ 5 V supply voltage (3 V respectively 12 V available on request).
- ★ DC supply via RF-connector.
- ★ Tools for mounting included.

SPECIFICATIONS

FOR GPS-COMBI MOUNT:

ELECTRICAL

General specifications

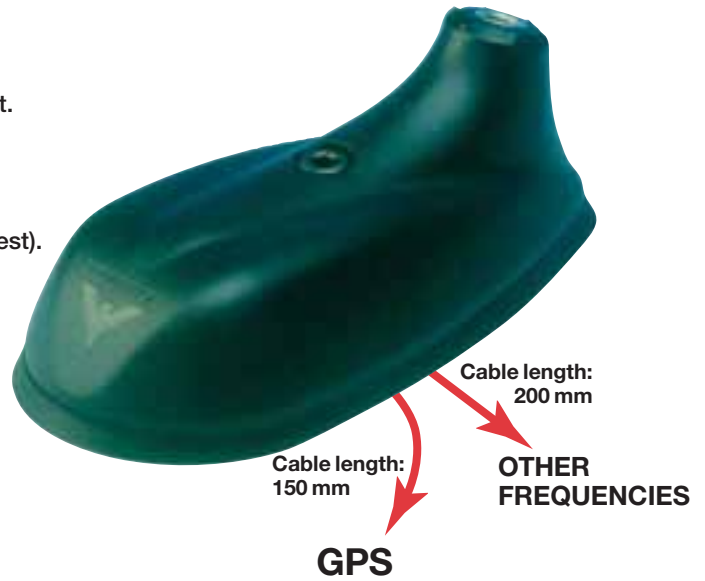
MODEL	GPS-COMBI MOUNT 3.5-7.5 mm
ANTENNA TYPE	Active patch antenna
FREQUENCY	1575 MHz
IMPEDANCE	Nom. 50 Ω
POLARISATION	Circular right-hand
COVERAGE	Hemispherical
GAIN	28 dBic in axial direction (typ.)
CROSS-POLARISATION ATT.	> 10 dB (typ.)
SELECTIVITY	> 45 dB down at ± 45 MHz

Built-in amplifier

GAIN	> 30 dB (typ.)
NOISE FIGURE	< 1 dB (typ.)
P _{1 dB}	Approx. +7 dBm
SWR (output)	≤ 2.0
SUPPLY VOLTAGE	5 ± 0.5 VDC (3 V resp. 12 V on request)
CURRENT CONSUMPTION	Approx. 25 mA

MECHANICAL (only for the GPS-part)

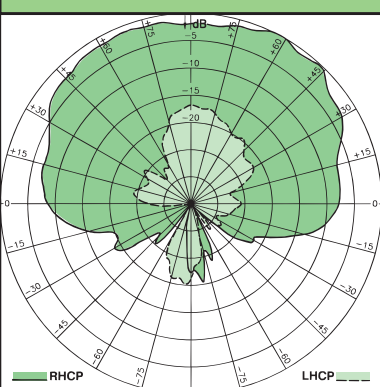
MATERIALS	Cu-nite brass Stainless steel Reinforced thermoplastic
ANTENNA COLOUR	Black
TEMP. RANGE	-35° C → +75° C
CONNECTOR	FME (male for GPS) + FME (female for mobile antenna)
RECOMMENDED INSTALL. TORQUE	4 ± 0.5 Nm
DIMENSIONS (H x L)	Approx. 30 x 89 mm
ROOF THICKNESS	3.5-7.5 mm
WEIGHT	Approx. 114 g
MOUNTING	∅19 mm dia. hole Tools for mounting included



Applicable to all GPS-C whip models



VERTICAL RADIATION PATTERN



TOOLS:

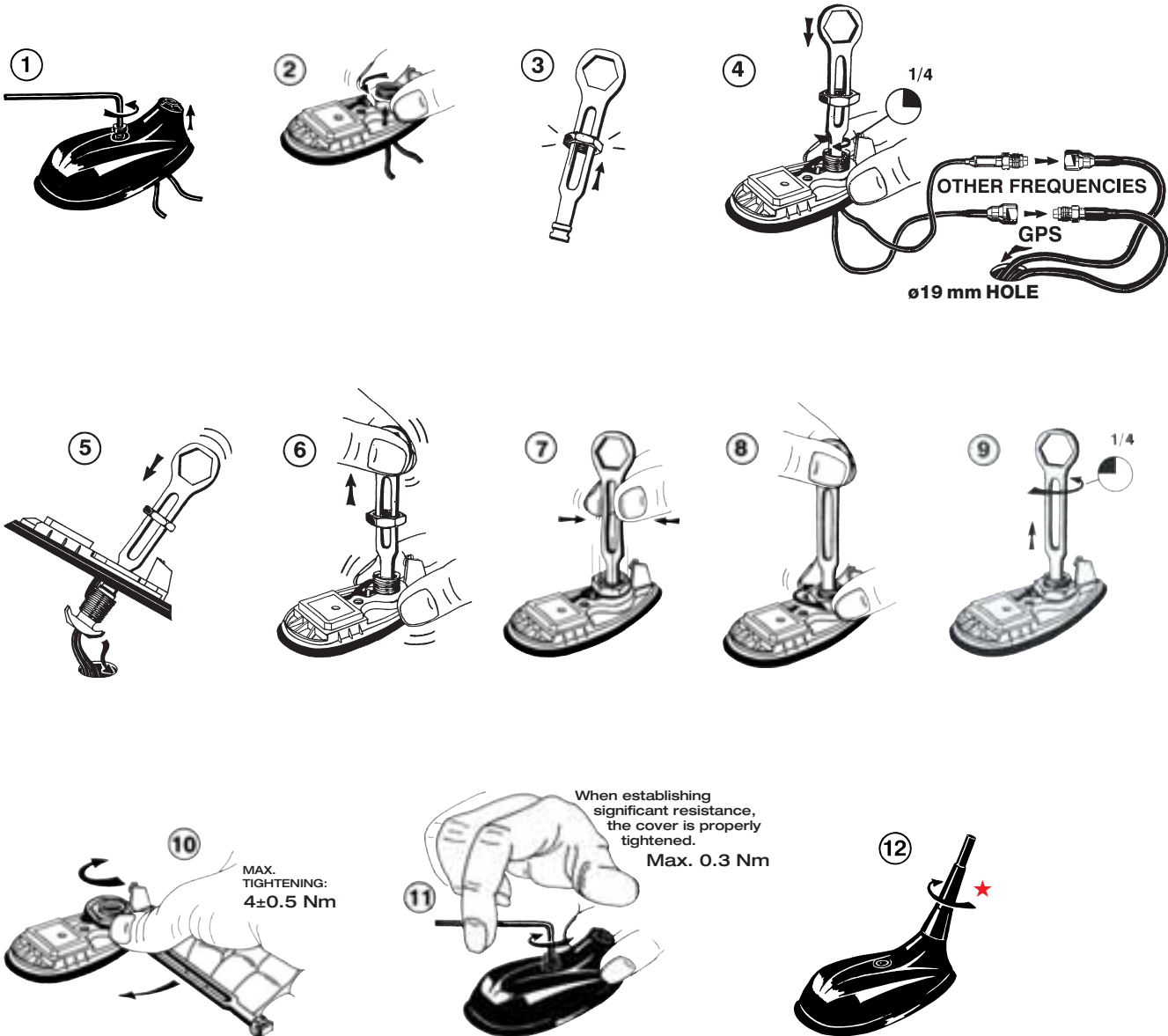


PROCOM A/S reserve the right to amend specifications without prior notice.

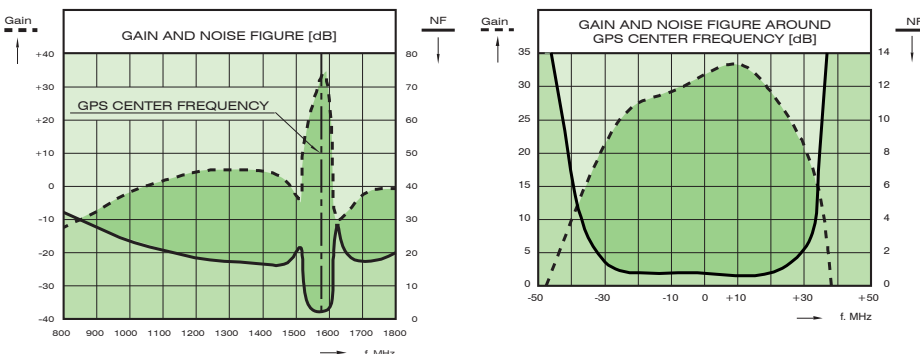
GPS-COMBI MOUNT 3.5-7.5 mm Installation



MOUNTING INSTRUCTIONS:



TYPICAL RESPONSE CURVES:



★ The whip should always be dismantled during car wash.

Do not use sealer on rubber gasket or other places.