

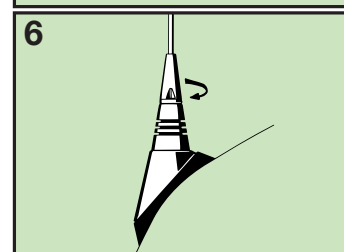
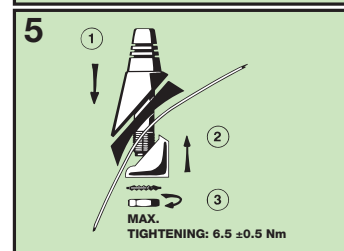
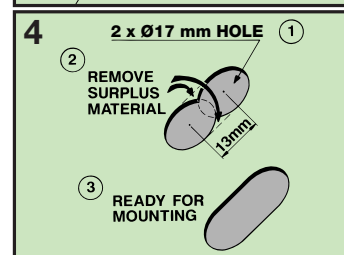
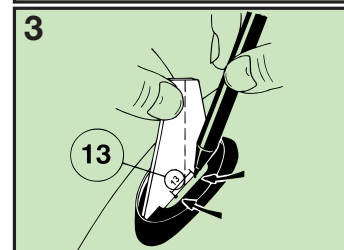
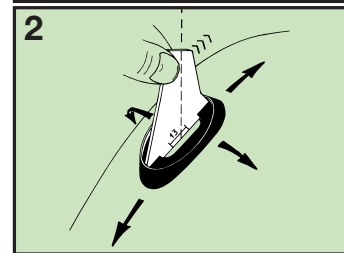
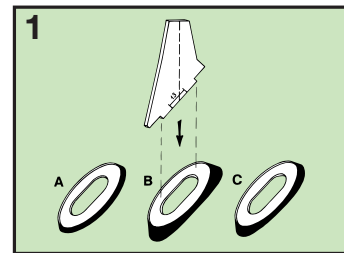
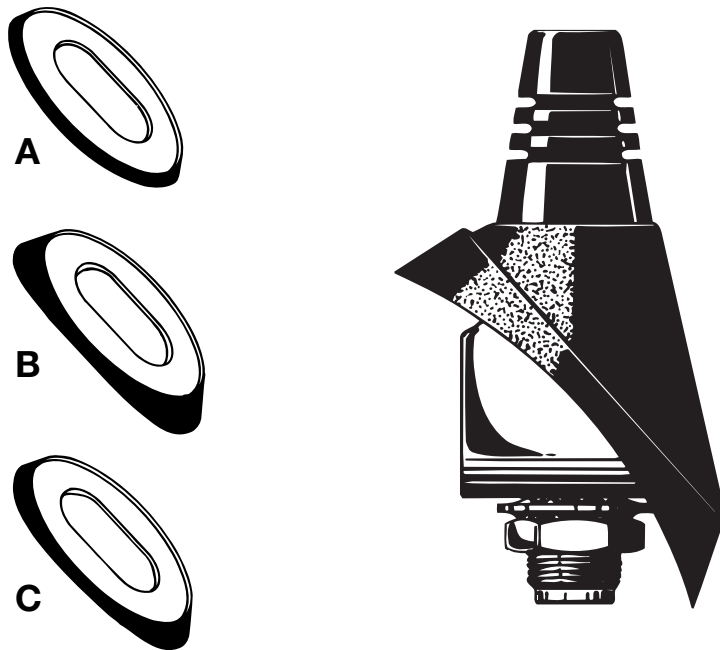
SM-Mount

Mobile Mount for Mounting on the Curved Wings



DESCRIPTION:

- ★ High-quality mobile mount for mounting on the curved wings.
- ★ M6 internal thread whip-fastening system.
- ★ Supplied with three different packing gaskets for optimum adjustment to the wing.
- ★ Provided with FME-connection system – cable to be ordered separately.
- ★ Whips available for communications bands within 66-1000 MHz.



ORDERING DESIGNATIONS:

Order this mount by simply asking for the **SM** (or **SM-mount**).
Cable is to be ordered separately.

SPECIFICATIONS:

| | |
|---------------------------------|--|
| MODEL | SM-Mount |
| APPLICATION | Mount for mobile antennas |
| FREQUENCY | 66–1000 MHz |
| CONNECTION TO WHIP | M6 internal thread |
| CONNECTOR | FME-connection system (supplied without cable) |
| MATERIALS | Stainless steel Cu-nite brass Environment-proof plastics |
| COLOUR | Black |
| HEIGHT | Approx. 50 mm |
| INSTALLATION DIA. | 45 x 55 mm (elliptic) |
| BUILD-IN DEPTH | Approx. 40 mm |
| RECOMMENDED INSTALLATION TORQUE | 6.5 ± 0.5 Nm |
| WEIGHT | 80 g |
| MOUNTING | 17 x 30 mm oval hole |

PROCOM A/S reserve the right to amend specifications without prior notice.

SM-Mount Installation



The SM-mount is especially designed for mounting on curved surfaces, e.g. the curved wings. The mount is supplied with three different packing gaskets to ensure the best possible adjustment to the wing contour at the desired locations of the installation.

Please refer to the installations steps described below.

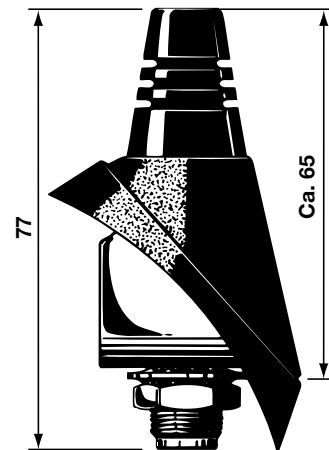
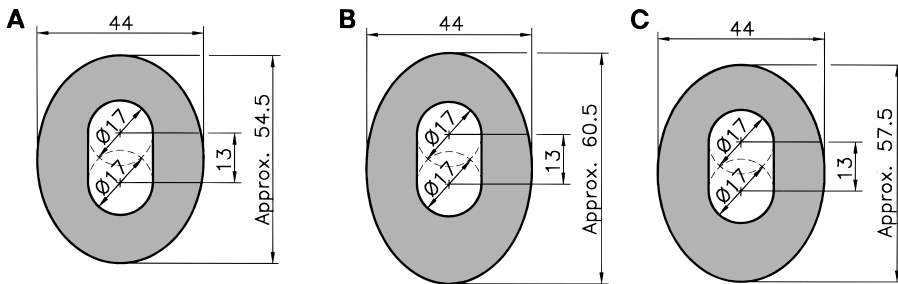
A good contact surface on the inside of the car body must always be ensured, thus enabling the base plate to get in direct contact with the metal parts of the car, which is of utmost importance for proper performance of the antenna.

When cleaning the car in car-washing machines, the whip should be removed. After wash, the whip is refitted and tightened lightly.

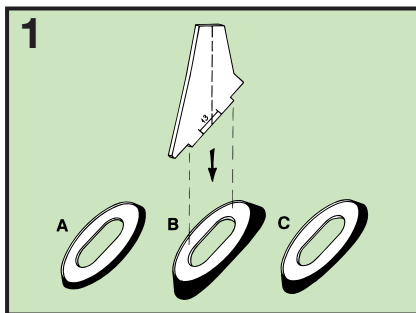
1. INSTALLATION DIMENSIONS:

SM-mount

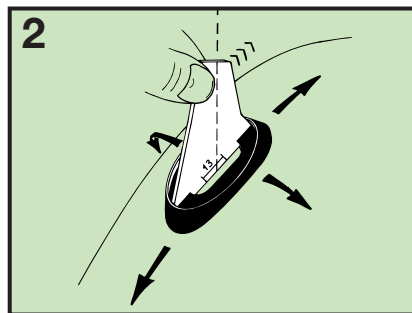
Foot Prints:



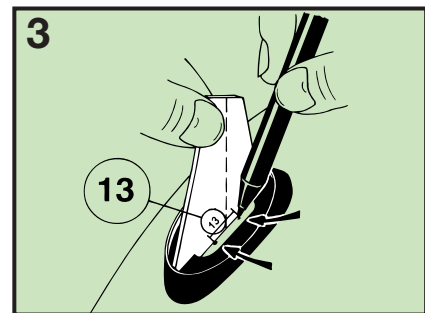
2. INSTALLATION STEPS:



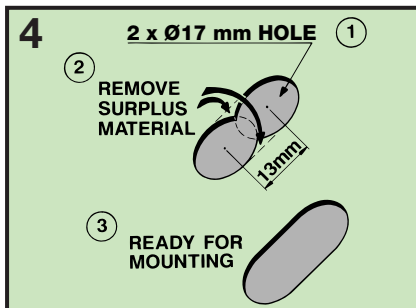
1. Installation tools.
To find a possible location for the installation of the SM-mount, the accompanying cardboard model of the mount may be used together with the three packing gaskets (types A, B and C). Which one of the packing gaskets to use depends on the angle and the curving of the wing.



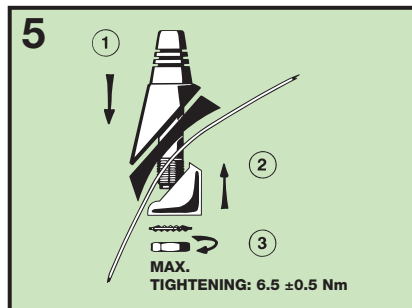
2. Determine a suitable location for the installation.
Use the cardboard model of the mount together with a packing gasket to check the fitting to the wing contour at the desired installation spot. Make sure that the desired positioning angle as indicated by the dotted line on the cardboard model can be obtained for the whip. If not, try another packing gasket or try moving the model to find an acceptable location for the installation. (The packing gasket should be oriented with the letter indicating the gasket type (A, B or C) at the bottom end). Check that there are no obstacles on the inside to prevent installation.



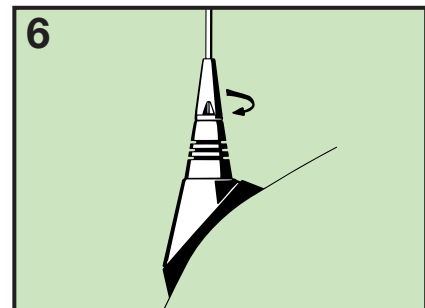
3. Mark the position for the SM-mount.
With the cardboard model in the correct position place two marks as indicated on the figure. The distance between the marks is 13 mm and the marks are to be placed as close to the cardboard model as possible. Remove the cardboard model and the packing gasket.



4. Make the hole for the installation.
The hole for the installation is made by drilling two 17 mm dia. holes with the marks as centres. The remaining metal between the holes is removed by cutting/nipping.



5. Install the SM-mount.
Install the SM-mount as shown in the figure. Fine-adjust the positioning of the whip before tightening the mount – recommended installation torque: 6.5 ± 0.5 Nm.



6. Fit the whip.
Fit the whip and tighten it lightly with a 9 mm fork spanner.