

ZG-Mount

Low Profile Mobile Antenna Mount
with Thread Stud

PROCOM

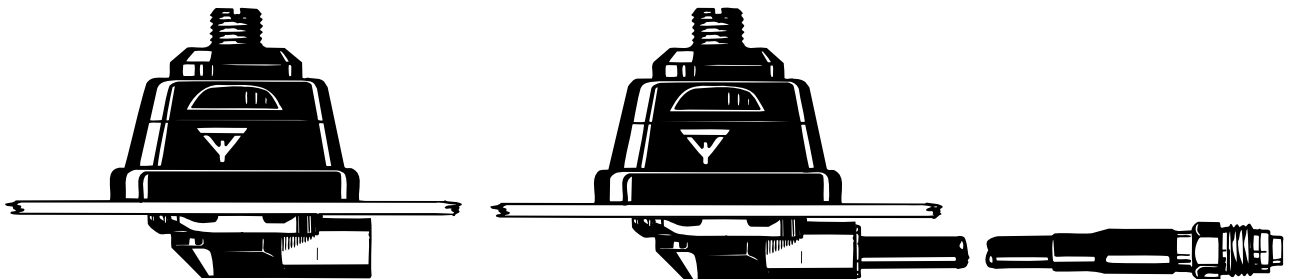


DESCRIPTION:

- ★ Used together with all PROCOM ZG-type antenna whips.
- ★ M8x1 thread whip-mounting system.
- ★ For installation on horizontal surfaces (roof top or trunk lid) in a 21 mm dia. hole.
- ★ Particularly well suited for rooftop-mounting because of very low internal protrusion and ability to be installed exclusively with access from the outside.
- ★ Complete line of whips available for all communications bands up to 1300 MHz.
- ★ Mounting body made of stainless steel!
- ★ Choice between two connection principles:
 - ★ ZG-mount : FME-connection (supplied without cable).
 - ★ ZGP4-mount : Permanently attached 4 m cable terminated with FME-connector.

ZG-Mount

ZGP4-Mount



ORDERING DESIGNATIONS:

VERSION	ZG-mount with FME-system	ZGP4-mount with 4 m cable and FME-connector
TYPE NO.	ZG-Mount	ZGP4-Mount

SPECIFICATIONS:

MODEL	ZG-Mount
APPLICATION	Low-profile mount for mobile antennas
FREQUENCY	0-1300 MHz
CONNECTION TO WHIP	M8x1 thread stud
MATERIALS	Stainless steel Black chromed brass Environment-proof plastics
COLOUR	Black
HEIGHT	Approx. 28 mm
INSTALLATION DIAMETER	38 mm
BUILD-IN DEPTH	10.5 mm
RECOMMENDED INSTALLATION TORQUE	7.5 ± 1 Nm
WEIGHT	ZG-version : Approx. 70 g ZGP4-version : Approx. 210 g
MOUNTING	21 mm dia. hole
ROOF THICKNESS	Max. 2 mm

FME-SYSTEM ACCESSORIES

FME-CABLES

LENGTH	TYPE NO.
1m	1m FME
2m	2m FME
3m	3m FME
4m	4m FME
5m	5m FME
6m	6m FME
4m white	4m FME-white
6m white	6m FME-white
12m white	12m FME-white
18m white	18m FME-white

For further information about other types of FME-cables please compare the cable data sheets under accessories in our catalogue.

FME-SYSTEM ACCESSORIES

FME-CONNECTORS

CONNECTOR	ORDER NO.
FME-FME	FME-FME
Prolongation	FMEP
N	FME-N
FSMA	FME-FSMA
BNC	FME-BNC
TNC	FME-TNC
UHF	FME-UHF
Mini-UHF	FME-MUHF
Elbow-MUHF	FME-EMUHF
Elbow-BNC	FME-EBNC
Elbow-TNC	FME-ETNC
SMA	FME-SMA

ZG-Mount Installation



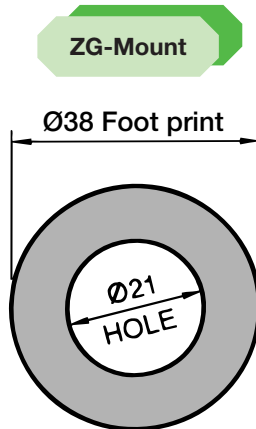
The ZG-mount is designed for mounting in a 21 mm dia. hole on horizontal surfaces as e.g. roof top or trunk lid, with access from the outside only.

A good contact surface on the inside of the car body must always be ensured, thus enabling the base plate to get in direct contact with the metal parts of the car, which is of utmost importance for proper performance of the antenna.

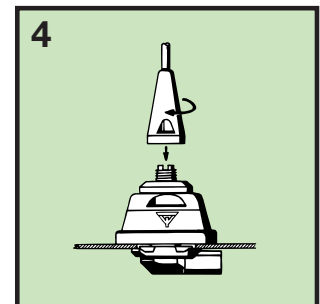
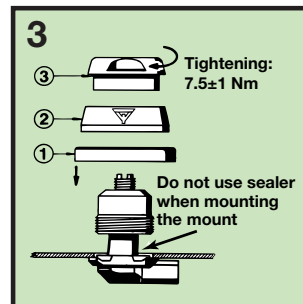
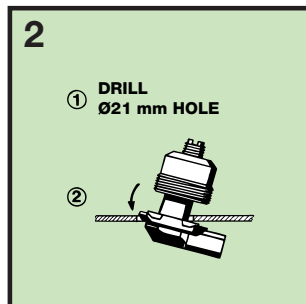
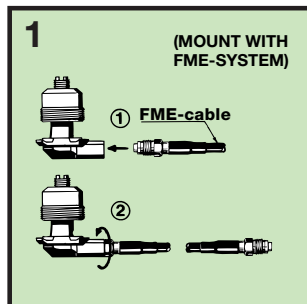
The ZG-mount is provided with an M8 x 1 thread mount system. This construction meets the demand for a low profile mobile mount with a slim appearance and with protection against theft of the antenna whip.

When cleaning the car in car-washing machines, the whip is easily removed using a fork spanner. The whip is refitted again by screwing it onto the thread stud and tightening it with the spanner.

1. INSTALLATION DIMENSIONS:



2. INSTALLATION STEPS:



Do not use sealer on rubber gasket or other places.

