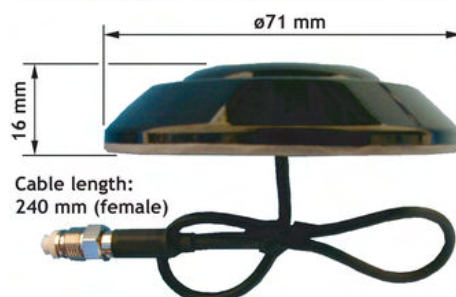


# GPS 2000 QM

Active Receiving Antenna for the 1575 MHz NAVSTAR GPS Satellite Navigational System for Landmobile Use

## DESCRIPTION

- Flat-pack GPS-antenna for fixed installations.
- Full hemispherical coverage.
- Built-in high gain, low noise amplifier.
- Right-Hand Circular Polarisation (RHCP).
- Available in black.
- 5 V supply voltage (3 V respectively 12 V available on request).
- DC supply via RF-connector.
- EMC tested to IEC 801 and IEC 255.
- Provided with FME (female) connector.
- Wide range of FME-accessories available.
- Double-adhesion procedure ensures fast and reliable fixing.



## SPECIFICATIONS

ELECTRICAL General specifications	
MODEL	GPS 2000 QM
ANTENNA TYPE	Active patch antenna
FREQUENCY	1575 MHz
IMPEDANCE	Nom. 50 Ω
POLARISATION	Circular right-hand
COVERAGE	Hemispherical
GAIN (in axial direction)	28 dBi (typ.)
CROSS-POLARISATION ATT.	> 10 dB (typ.)
SELECTIVITY	> 45 dB down at ± 45 MHz
BUILT-IN AMPLIFIER	
GAIN	> 30 dB (typ.)
NOISE FIGURE	≤ 1 dB (typ.)
SWR (output)	≤ 2.0
SUPPLY VOLTAGE	5 ± 0.5 VDC (3 V respectively 12 V available on request)
CURRENT CONSUMPTION	Approx. 20 mA
MECHANICAL	
MOUNTING	10 mm dia. hole
MATERIALS	Cu-nite brass Seawater resistant Lexan
COLOUR	Black
TEMP. RANGE	-30° C → +70° C
CONNECTOR	FME (female)
HEIGHT	Approx. 16 mm
WIDTH/LENGTH	ø71 mm
WEIGHT	Approx. 90 g

## FME-SYSTEM ACCESSORIES

FME-CABLES	
LENGTH	TYPE NO.
1 m	1 m FME
2 m	2 m FME
3 m	3 m FME
4 m	4 m FME
5 m	5 m FME
6 m	6 m FME
4 m white	4 m FME-white
6 m white	6 m FME-white
12 m white	12 m FME-white
18 m white	18 m FME-white

FME-CONNECTORS	
CONNECTOR	ORDER NO.
FME-FME	FME-FME
Prolongation	FMEP
N	FME-N
FSMA	FME-FSMA
BNC	FME-BNC
TNC	FME.TNC
UHF	FME-UHF
Mini-UHF	FME-MUHF
Elbow-MUHF	FME-EMUHF
Elbow-BNC	FME-EBNC
Elbow-TNC	FME-ETNC
SMA	FME-SMA

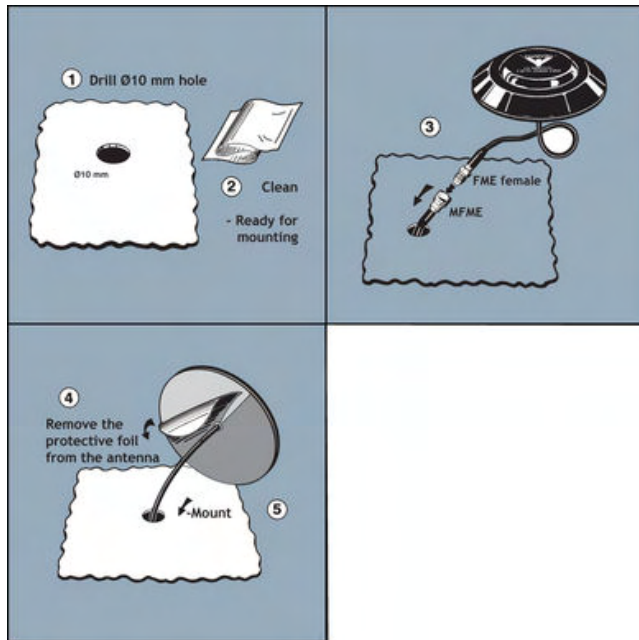
For further information about other types of FME-cables please compare the cable data sheets under accessories in our catalogue.

## INSTALLATION

### 1. BEFORE INSTALLATION

Environmental and car temperature must be above 15° C at installation, and installation surface must be dry and clean.

### 2. INSTALLATION

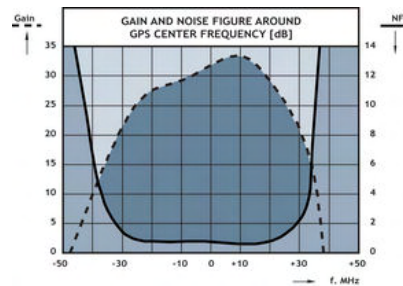
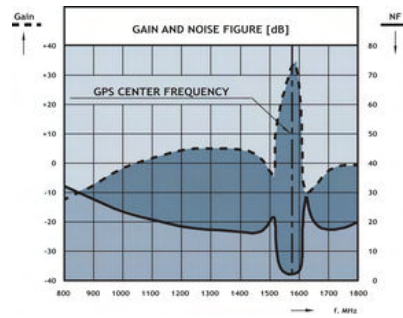


### 3. ADHESION ADVICE

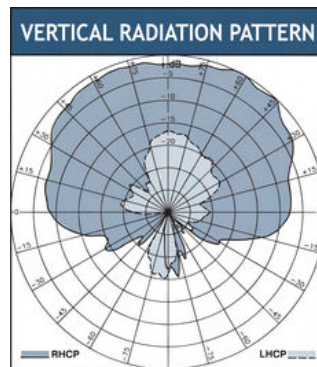
- It is essential for a good adhesion result that the surface is properly cleaned and dry.
- A high application pressure improves the binding power.
- Ideal application temperature range is +20° C to +38° C but may be extended down to +15° C. When applied binding strength is maintained between -30° C and +70° C.

Do not use sealer on rubber gasket or other places.

## TYPICAL RESPONSE CURVES



## RADIATION PATTERN



Procom A/S reserve the right to amend specifications without prior notice.



PROCOM A/S reserve the right to amend specifications without prior notice.

16/01/2009