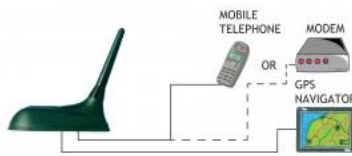


GPS-C 900/1800/UMTS/WIFI

GPS Antenna with a $\frac{1}{4} \lambda$ Multiband Mobile Antenna for the 900 MHz, 1800 MHz, UMTS and WIFI Bands

DESCRIPTION

- GPS-antenna for fixed installations.
- External antenna whip mounted on the GPS-Combi mount.
- Full hemispherical coverage.
- Built-in high-gain, low-noise amplifier.
- Right-Hand Circular Polarization (RHCP).
- 5 V supply voltage (3 V respectively 12 V available on request).
- DC supply via RF-connector.
- Multiband antenna covering EGSM-900, DCS-1800, UMTS and WIFI.



ORDERING DESIGNATIONS

TYPE	PRODUCT NO.
GPS-C 900/1800/UMTS/WIFI	132000146

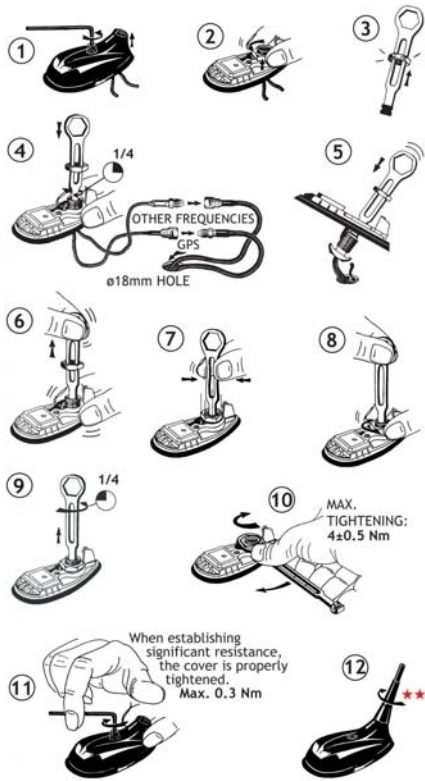
SPECIFICATIONS FOR WHIP

ELECTRICAL	
MODEL	GPS-C 900/1800/UMTS/WIFI
ANTENNA TYPE	Multiband antenna
FREQUENCY	880 - 960 MHz (EGSM) 1710 - 1880 MHz (DCS) 1900 - 2200 MHz (UMTS) 2400 - 2700 MHz (WIFI)
IMPEDANCE	Nom. 50 Ω
POLARIZATION	Vertical
GAIN	Approx. 0 dB (acc. to EIA RS-329-1) on all bands
BANDWIDTH	900 MHz: ≥ 80 MHz @ SWR ≤ 2.0 1700 - 2700 MHz: ≥ 1000 MHz @ SWR ≤ 2.5
SWR	≤ 1.5 @ f. res.
MAX. POWER	25 W
MECHANICAL	
MATERIALS	Black-chromed brass Black POM
COLOUR	Black
HEIGHT	Approx. 71 mm
WEIGHT	Approx. 20 g
MOUNTING	On the GPS-WIFI Combi Mount

SPECIFICATIONS FOR GPS-WIFI COMBI MOUNT

ELECTRICAL GENERAL SPECIFICATIONS	
MODEL	GPS-WIFI COMBI MOUNT
ANTENNA TYPE	Active patch antenna
FREQUENCY	1575 MHz
IMPEDANCE	Nom. 50 Ω
POLARIZATION	Circular right-hand
COVERAGE	Hemispherical
GAIN	28 dBic in axial direction (typ.)
CROSS-POLARIZATION ATT.	> 10 dB (typ.)
SELECTIVITY	> 45 dB down @ ± 45 MHz
BUILT-IN AMPLIFIER	
GAIN	> 30 dB (typ.)
NOISE FIGURE	< 1 dB (typ.)
P 1 dB	Approx. +7 dBm
SWR (output)	≤ 2.0
SUPPLY VOLTAGE	5 ± 0.5 VDC (3 V resp. 12 V on request)
CURRENT CONSUMPTION	Approx. 25 mA
MECHANICAL (ONLY FOR THE GPS-PART)	
MATERIALS	Cu-nite brass Stainless steel Reinforced thermoplastic
ANTENNA COLOUR	Black
TEMP. RANGE	-35° C \rightarrow $+75^{\circ}$ C
CONNECTOR	FME (male for GPS) + SMA (male for mobile antenna)
RECOMMENDED INSTALL. TORQUE	4 ± 0.5 Nm
DIMENSIONS (H x L)	Approx. 30 x 89 mm
ROOF THICKNESS	Max. 2.5 mm
WEIGHT	114 g
MOUNTING	$\phi 18.0$ mm dia. hole for roof thickness up to 2.0 mm $\phi 18.5$ mm dia. hole for roof thickness 2.0 - 2.5 mm Tools for mounting included

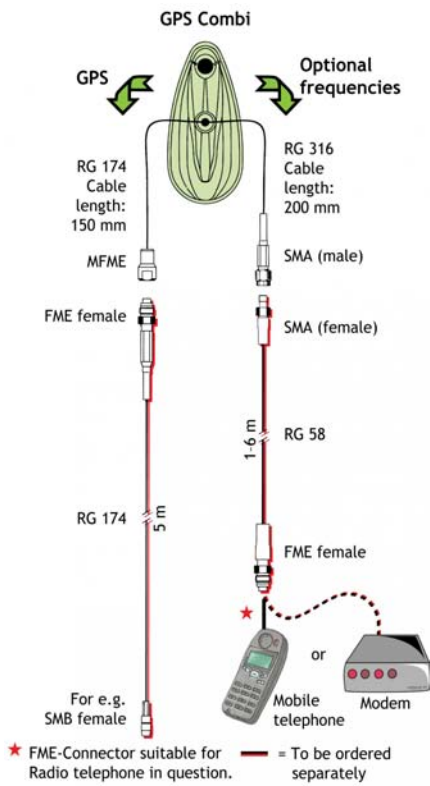
MOUNTING INSTRUCTIONS



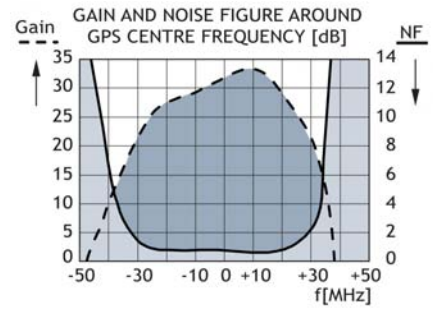
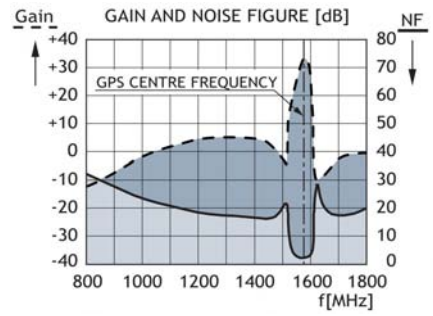
★★ The whip should always be dismantled during car wash.

Do not use sealer on rubber gasket or other places.

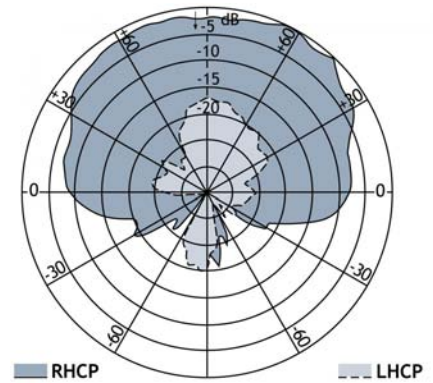
CABLE MOUNTING



TYPICAL RESPONSE CURVE



VERTICAL RADIATION PATTERN



PROCOM A/S reserve the right to amend specifications without prior notice.
14/09/11