

MU 9-XP4/...

450 MHz 2 dB Mobile Antenna for Glass fibre Roof

DESCRIPTION

- Groundplane independent antenna for installation on non-conducting surfaces.
- Ideal for glassfiber roofs as can be found on some trucks, busses, transport vans and trains.
- MU 9-XP4/s can be tuned by cutting within 380...410 MHz.
MU 9-XP4/l can be tuned by cutting within 400...440 MHz.
MU 9-XP4/h can be tuned by cutting within 430...470 MHz.
- M6-thread whip-fastening system.
- Simple mounting exclusively with access from the outside.
- Models available with oblong or circular mount.
- Delivered with permanently attached 4 m cable terminated with FME-connector.



SPECIFICATIONS

ELECTRICAL	
MODEL	MU 9-XP4/...
ANTENNA TYPE	End-fed 1/2 λ mobile whip antenna
FREQUENCY	450 MHz-band covered by three models
IMPEDANCE	Nom. 50 Ω
POLARIZATION	Vertical
GAIN	2 dB (acc. to EIA RS-329-1)
BANDWIDTH	≥ 15 MHz @ SWR ≤ 1.5 ≥ 30 MHz @ SWR ≤ 2.0
SWR	≤ 1.3 @ f. res.
MAX. POWER	40 W
MECHANICAL	
MATERIALS	Whip: Polyethylene-covered spring steel wire Mount: Black-chromed brass Weather- and shockproof plastics Surface treated steel
RECOMMENDED INSTALLATION TORQUE	Max. 3 Nm
CABLE	4 m cable terminated with FME-connector
COLOUR	Black
HEIGHT	Approx. 41 cm
WEIGHT	Approx. 210 g
MOUNTING	From outside: 21 mm dia. hole From inside: 14 mm dia. hole
ROOF THICKNESS	0.6 → 5.0 mm

To help selecting the correct model for a specific cellular network please consult the survey of cellular network frequencies under USEFUL DATA in our catalogues.

Please note that the MU 9-XP4 type "s", "l" and "h"-mounts contain matching transformers. Consequently, these special mounts cannot operate with other whip types.

ORDERING DESIGNATIONS

FREQUENCY/CELLULAR SYSTEM	MOUNT VERSION		
	Oblong mount with 4 m cable + FME-connector	Circular mount with 4 m cable + FME-connector	
FIELD TUNABLE MODELS	380...410 MHz	MU 9-XP4/s	MU 9-CXP4/s
	400...440 MHz	MU 9-XP4/l	MU 9-CXP4/l
	430...470 MHz	MU 9-XP4/h	MU 9-CXP4/h
READY-TUNED MODELS (examples)	NMT-450, Norway	MU 9-XP4/h, NMT	MU 9-CXP4/h, NMT
	C-NET, Germany	MU 9-XP4/h, CNET	MU 9-CXP4/h, CNET
	Radiocom 2000, France	MU 9-XP4/h, R2000	MU 9-CXP4/h, R2000

The MU 9-XP4 is delivered in three field tunable models but may also be delivered ready-tuned for CELLULAR systems. When ordering a ready-tuned model, the name of the desired cellular system must be added to the antenna model number.

INSTALLATION

This antenna is especially designed for installation on non-conducting surfaces as e.g. fiberglass roofs, as can be found on some trucks, busses, transport vans and trains.

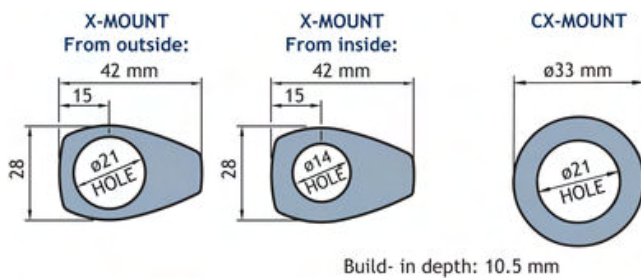
The antenna is an end-fed, $\frac{1}{2} \lambda$ -dipole concept which can be fed in such a way that the antenna does not require a "groundplane" as required by the standard $\frac{1}{4} \lambda$, $\frac{5}{8} \lambda$ or colinear mobile whips.

It is useful to note that this antenna type can be used anywhere, where the ground-plane is poor or completely missing, as e.g.: side-mounted on a clamp as a pager antenna on a wall, or mounted at the very edge of a ground-plane without the loss induced by a tilted radiation pattern.

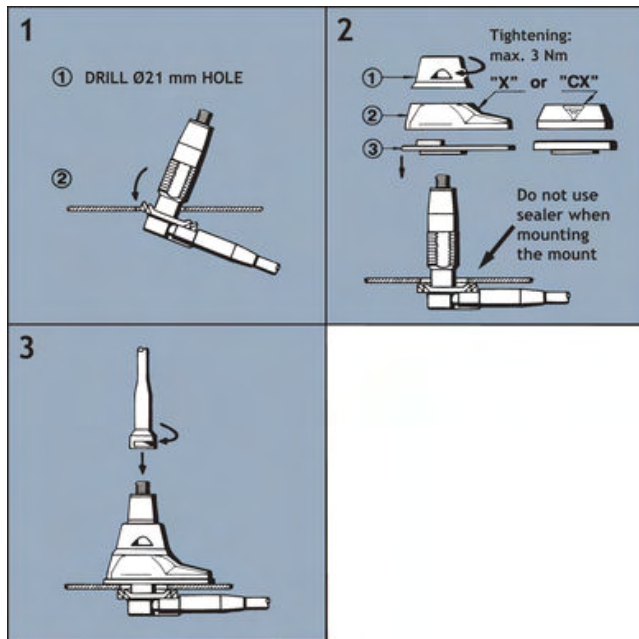
The antenna must be mounted on a horizontal surface. When cleaning the vehicle in car-washing machines, the whip is easily dismounted using a spanner, size 9 mm. The whip is refitted again by screwing it onto the M6 thread stud on the mount and tightening it lightly with the spanner.

A polyethylene-covered, closely spirally wound flat steel-band material causes the whip always to stand erect while at the same time being very flexible.

1. INSTALLATION DIMENSIONS:



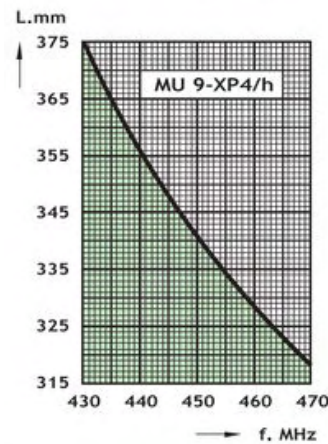
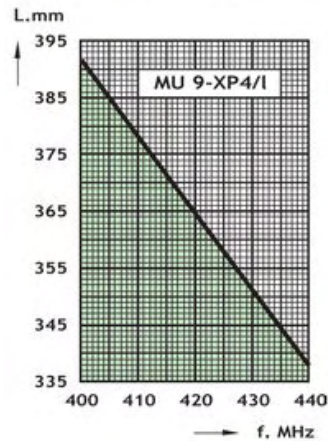
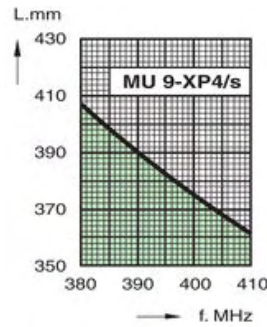
2. INSTALLATION STEPS (From outside):



Do not use sealer on rubber gasket or other places.

3. TUNING:

The antenna should always be tuned using an SWR-indicating device. The cutting diagrams below serve as a guide for this procedure.



PROCOM A/S reserve the right to amend specifications without prior notice.

15/04/2011