

MU 5-Z/...

Unity Gain $1/4 \lambda$ Mobile Antenna for the 450 MHz Band

PROCOM

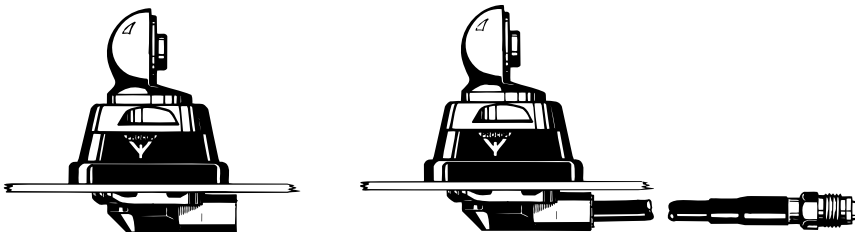


DESCRIPTION:

- ★ Sturdy, conical, flexible rubber whip.
- ★ MU 5-Z/s covers 370–410 MHz
MU 5-Z/l covers 406–440 MHz
MU 5-Z/h covers 430–470 MHz
– no tuning required.
- ★ Stainless steel Z-mount with ball-joint and wing screw whip-fastening system.
- ★ Simple mounting exclusively with access from the outside.
- ★ Choice between two connection principles:
 - ★ Z-mount : FME-connection (supplied without cable).
 - ★ ZP4-mount : Permanently attached 4 m cable terminated with FME-connector.

Z-Mount

ZP4-Mount



ORDERING DESIGNATIONS:

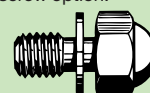
FREQ. RANGE \ MOUNT	Z-mount with FME-system	ZP4-mount with 4 m cable and FME-connector
370–410 MHz	MU 5-Z/s	MU 5-ZP4/s
406–440 MHz	MU 5-Z/l	MU 5-ZP4/l
430–470 MHz	MU 5-Z/h	MU 5-ZP4/h

SPECIFICATIONS:

ELECTRICAL	
MODEL	MU 5-Z/...
ANTENNA TYPE	$1/4 \lambda$ mobile whip antenna
FREQUENCY	450 MHz-band covered by three models
IMPEDANCE	Nom. 50 Ω
POLARISATION	Vertical
GAIN	0 dB (acc. to EIA RS-329-1)
BAND WIDTH	≥ 45 MHz @ SWR ≤ 1.5
SWR	≤ 1.2 @ f. res.
MAX. POWER	100 watts
MECHANICAL	
MATERIALS	Whip: Sturdy, flexible rubber with cast-in multicore steel wire radiating element Chromed brass
	Mount: Chromed brass Environment-proof plastics Stainless steel
RECOMMENDED INSTALLATION TORQUE	7.5 \pm 1 Nm
COLOUR	Black/Bright chromium
HEIGHT	Approx. 190 mm
WEIGHT	Z-version : Approx. 160 g ZP4-version : Approx. 300 g
MOUNTING	21 mm dia. hole



Hat screw option:



For antenna delivered with hat screw instead of wing screw add a K to the antenna designation.

PROCOM A/S reserve the right to amend specifications without prior notice.

MU 5-Z/... Installation

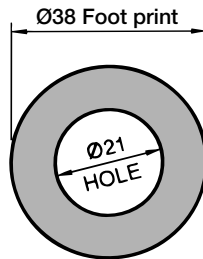
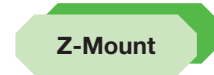


This antenna should always be mounted on the car roof to ensure best omnidirectional coverage.

The antenna is provided with type Z-mount. The whip is fastened to the mount by means of our standard ball-joint and wing screw system. The adjustable ball-joint ensures that the whip can always be mounted in a vertical position independent of the angle of the installation spot.

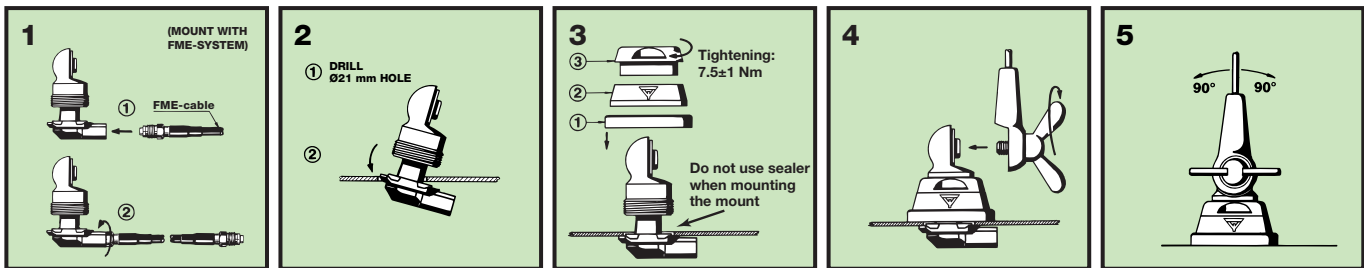
The Z-mount is particularly well suited for mounting on car roofs because of its ability to be installed exclusively with access from the outside.

1. INSTALLATION DIMENSIONS:



Build-in depth: 10.5 mm

2. INSTALLATION STEPS:



3. TUNING/MODEL CONVERSION:

The antenna is delivered factory-tuned and requires no further tuning.

To convert an MU 5-Z/s model into an MU 5-Z/l model, cut off 13 mm of the top end of the whip.

To convert an MU 5-Z/l model into an MU 5-Z/h model, cut off 13 mm of the top end of the whip.

PLEASE NOTE:

As standard the antenna is provided with a wing screw. However, the wing screw may be replaced by the less obtrusive hat screw (with key), which also gives an improved protection against theft. To order the antenna with hat nut, please add a "K" to the antenna designation.