

# MU 3-BZ

3 dB Gain  $5/8 \lambda$  Mobile Antenna for the 450 MHz Band

## DESCRIPTION

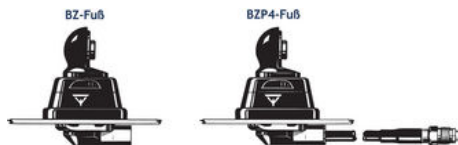
- Black-chromed stainless steel whip with toggle joint.
- Tunable by cutting in the range 400...470 MHz.
- Stainless steel BZ-mount with ball-joint and wing screw whip-fastening system.
- Simple mounting exclusively with access from the outside. Models with roof thickness from 2 mm to 7.5 mm mounting from the inside.
- Choice between two connection principles:
  - BZ-mount: FME-connection (supplied without cable).
  - BZP4-mount: Permanently attached 4 m cable terminated with FME-connector.



### Hat screw option:



For antenna delivered with hat screw instead of wing screw add a K to the antenna designation.



## ORDERING DESIGNATIONS

MOUNT VERSION	TYPE NO.
BZ-mount with FME-system	MU 3-BZ
BZP4-mount with 4 m cable and FME-connector	MU 3-BZP4

## SPECIFICATIONS

ELECTRICAL	
MODEL	MU 3-BZ
ANTENNA TYPE	$5/8 \lambda$ mobile whip antenna
FREQUENCY	Tunable by cutting within: 400...470 MHz
IMPEDANCE	Nom. 50 $\Omega$
POLARISATION	Vertical
GAIN	Approx. 3 dB
BAND WIDTH	$\geq 12$ MHz @ SWR $\leq 1.5$
SWR	$\leq 1.3$ @ f. res.
MAX. POWER	100 W
MECHANICAL	
MATERIALS	<b>Whip:</b> Stainless steel, black-chromed Black-chromed brass <b>Mount:</b> Black-chromed brass Environment-proof plastics Stainless steel
RECOMMENDED INSTALLATION TORQUE	7.5 $\pm$ 1 Nm
COLOUR	Black
HEIGHT	Approx. 58 cm
WEIGHT	BZ-version: Approx. 140 g BZP4-version: Approx. 280 g
MOUNTING	$\varnothing 21$ mm dia. hole (For roof thickness 2 mm up to 7.5 mm mounting hole should be $\varnothing 22$ mm dia.)
ROOF THICKNESS	Max. 2.0 mm (Models up to 7.5 mm on request)

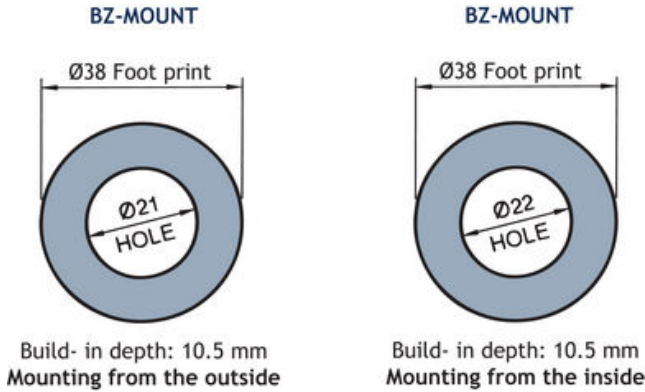
## INSTALLATION

This antenna is provided with type BZ-mount. The whip is fastened to the mount by means of our standard ball-joint and wing screw system. The adjustable ball-joint ensures that the whip can always be mounted in a vertical position independent of the angle of the installation spot.

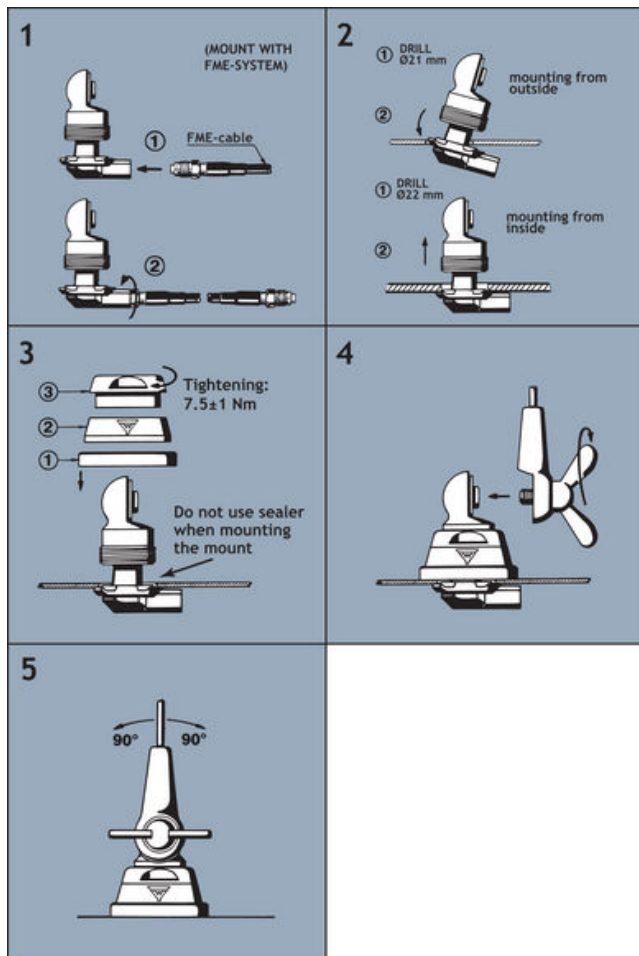
The BZ-mount is particularly well suited for mounting on car-roofs because of its ability to be installed exclusively with access from the outside. The Z-Mount for roof thickness from 2 mm to 7.5 mm must be mounted from the inside.

However, the antenna can be installed anywhere on the car, as the BZ-mount is equally well suited for mounting on e.g. trunk or wing.

### 1. INSTALLATION DIMENSIONS:



### 2. INSTALLATION STEPS:



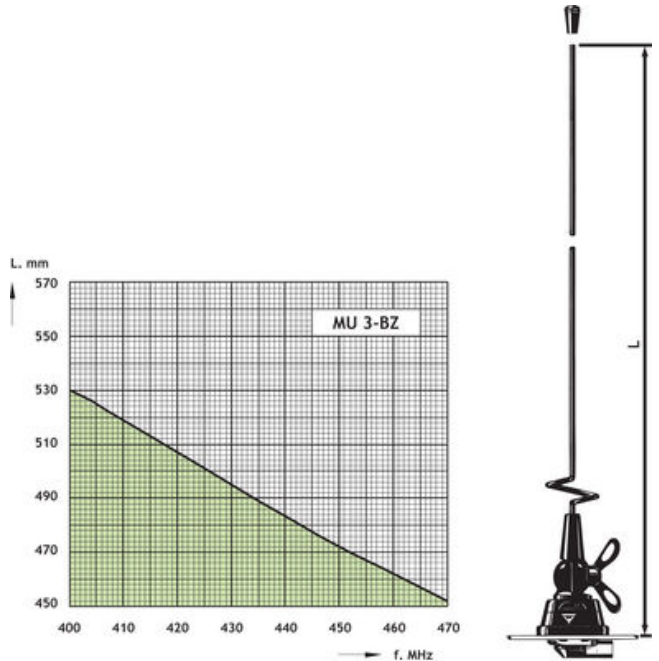
Do not use sealer on rubber gasket or other places.

### 3. TUNING:

The antenna should always be tuned using an SWR-meter. The cutting diagram below serves as a guide for this procedure.

### PLEASE NOTE

1. As standard the antenna is provided with wing screw. However, the wing screw may be replaced by the less obtrusive hat screw (with key), which also gives an improved protection against theft. To order the antenna with hat screw, please add a "K" to the antenna designation.
2. The antenna can be delivered factory-tuned to customer's frequencies. Please consult our price list concerning additional charges for adjustment by cutting.



PROCOM A/S reserve the right to amend specifications without prior notice.

05/05/2009