

MH 4-Z

1/4 λ Mobile Rubber Antenna for the 160 MHz Band

DESCRIPTION

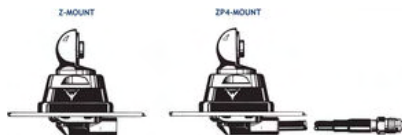
- High-flexibility rubber whip with cast-in steel-wire radiating element.
- Ideal where the whip may be exposed to mechanical shock or severe deflection when driving under low objects.
- Stainless steel Z-mount with ball-joint and wing screw whip-fastening system.
- Simple mounting exclusively with access from the outside. Models with roof thickness from 2 mm to 7.5 mm mounting from the inside.
- Choice between two connection principles:
 - Z-mount: FME-connection (supplied without cable).
 - ZP4-mount: Permanently attached 4 m cable terminated with FME-connector.



Hat screw option:



For antenna delivered with hat screw instead of wing screw add a H to the antenna designation.



ORDERING DESIGNATIONS

MOUNT VERSION	TYPE NO.
Z-mount with FME-system	MH 4-Z
ZP4-mount with 4 m cable and FME-connector	MH 4-ZP4

SPECIFICATIONS

ELECTRICAL	
MODEL	MH 4-Z
ANTENNA TYPE	1/4 λ mobile whip antenna
FREQUENCY	Tunable by cutting within: 144...175 MHz (Also applicable: 175...225 MHz)
IMPEDANCE	Nom. 50 Ω
POLARISATION	Vertical
GAIN	0 dB (acc. to EIA RS-329-1)
BAND WIDTH	≥ 15 MHz @ SWR ≤ 2.0
SWR	≤ 1.3 @ f.res.
MAX. POWER	150 W
MECHANICAL	
MATERIALS	Whip: Multicore steel wire moulded in elastomer Chromed brass Mount: Chromed brass Environment-proof plastics Stainless steel
RECOMMENDED INSTALLATION TORQUE	7.5 ± 1 Nm
COLOUR	Black
HEIGHT	Approx. 49 cm
WEIGHT	Z-version: Approx. 200 g ZP4-version: Approx. 350 g
MOUNTING	ø21 mm dia. hole (For roof thickness 2 mm up to 7.5 mm mounting hole should be ø22 mm dia.)
ROOF THICKNESS	Max. 2.0 mm (Models up to 7.5 mm on request)

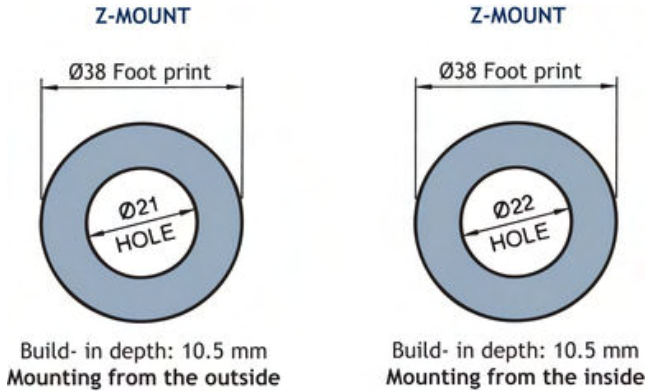
INSTALLATION

This antenna is provided with type Z-mount. The whip is fastened to the mount by means of our standard ball-joint and wing screw system. The adjustable ball-joint ensures that the whip can always be mounted in a vertical position independent of the angle of the installation spot.

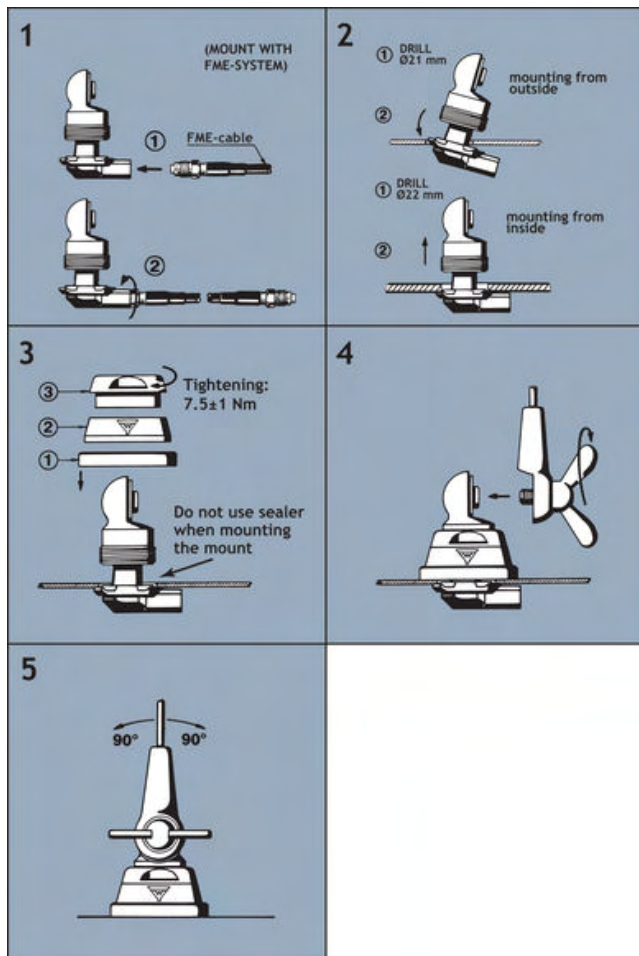
The Z-mount is particularly well suited for mounting on car-roofs because of its ability to be installed exclusively with access from the outside. The Z-Mount for roof thickness from 2 mm to 7.5 mm must be mounted from the inside.

However, the antenna can be installed anywhere on the car, as the Z-mount is equally well suited for mounting on e.g. trunk or wing.

1. INSTALLATION DIMENSIONS:

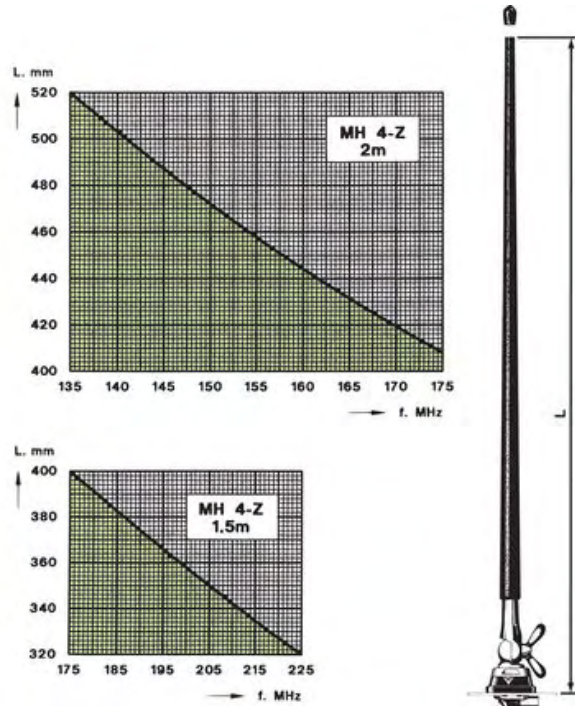


2. INSTALLATION STEPS:



3. TUNING:

The antenna should always be tuned using an SWR-meter. The cutting diagrams below serve as a guide for this procedure.



PROCOM A/S reserve the right to amend specifications without prior notice.

16/01/2009