

GPS-C 4/2/TETRA-S BBMU/...

Colinear Mobile Antenna for the 4m, 2m and TETRA Bands

DESCRIPTION

- GPS-antenna for fixed installations.
- External antenna whip mounted on the GPS-Combi mount.
- Full hemispherical coverage.
- Built-in high-gain, low-noise amplifier.
- Right-Hand Circular Polarization (RHCP).
- 5 V supply voltage (3 V respectively 12 V available on request).
- DC supply via RF-connector.
- Polyethylene-covered flexible whip.
- Easily removable whip for car wash.
- Matching unit (BBMU) included.



SPECIFICATIONS FOR WHIP

ELECTRICAL	
MODEL	GPS-C 4/2/TETRA-S BBMU/...
ANTENNA TYPE	Colinear mobile whip antenna
FREQUENCY	4 m: 74.2 - 87.5 MHz 2 m: 167.5 - 174 MHz 70 cm: 380 - 400 MHz
SWR	74.2 - 77.7 and 84 - 87.5 MHz: ≤ 2.5 167.5 - 169.5 and 172 - 174 MHz: ≤ 2.0 380 - 400 MHz: ≤ 2.0
IMPEDANCE	Nom. 50 Ω
POLARIZATION	Vertical
GAIN	4 m: ca. -2 dB 2 m: ca. -4 dB 70 cm: ca. 2 dB (acc. to EIA RS-329-1)
MAX. POWER	25 W
MECHANICAL	
MATERIALS	Whip: Glass fibre whip with copper wire winding, polyethylene-covered Black-chromed brass Spring: Black-chromed stainless steel
COLOUR	Black
HEIGHT	670 mm
WEIGHT	60 g
MOUNTING	On the GPS-Combi mount

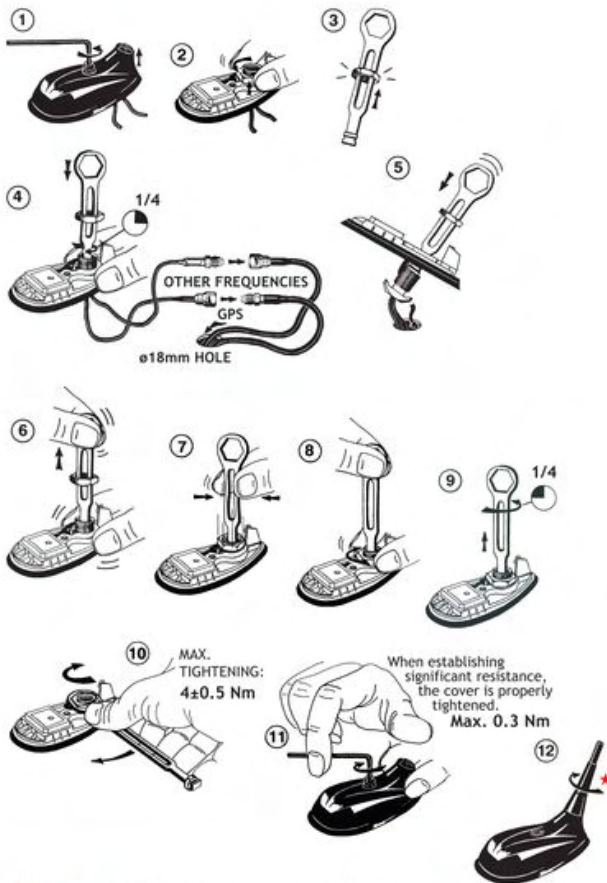
ORDERING DESIGNATIONS

TYPE	PRODUCT NO.	ROOF THICKNESS
GPS-C 4/2/TETRA-S BBMU/2mm	132 000 084	Max. 2.0 mm
GPS-C 4/2/TETRA-S BBMU/7mm	132 000 096	3.5 - 7.5 mm

SPECIFICATIONS FOR GPS-COMBI MOUNT

ELECTRICAL General specifications	
MODEL	GPS-COMBI MOUNT
ANTENNA TYPE	Active patch antenna
FREQUENCY	1575 MHz
IMPEDANCE	Nom. 50 Ω
POLARIZATION	Circular right-hand
COVERAGE	Hemispherical
GAIN	28 dBic in axial direction (typ.)
CROSS-POLARIZATION ATT.	> 10 dB (typ.)
Built-in amplifier	
GAIN	> 30 dB (typ.)
NOISE FIGURE	< 1 dB (typ.)
P ₁ dB	Approx. +7 dBm
SELECTIVITY	> 45 dB down at ± 45 MHz
SWR (output)	≤ 2.0
SUPPLY VOLTAGE	5 ± 0.5 VDC (3 V resp. 12 V on request)
CURRENT CONSUMPTION	Approx. 25 mA
MECHANICAL (only for the GPS-part)	
MATERIALS	Cu-nite brass. Stainless steel Reinforced thermoplastic
ANTENNA COLOUR	Black
TEMP. RANGE	-35° C → +75° C
CONNECTOR	FME (male for GPS) + FME (female for mobile antenna)
RECOMMENDED INSTALL. TORQUE	4 ± 0.5 Nm
DIMENSIONS (H x L)	Approx. 30 x 89 mm
ROOF THICKNESS	Max. 2.0 mm or 3.5 - 7.5 mm
WEIGHT	Approx. 114 g
MOUNTING	ø18 mm dia. hole (For roof thickness 2.5 mm mounting hole should be ø18.5 mm dia.) For roof thickness 3.5 mm up to 7.5 mm mounting hole should be ø19 mm dia. Tools for mounting included

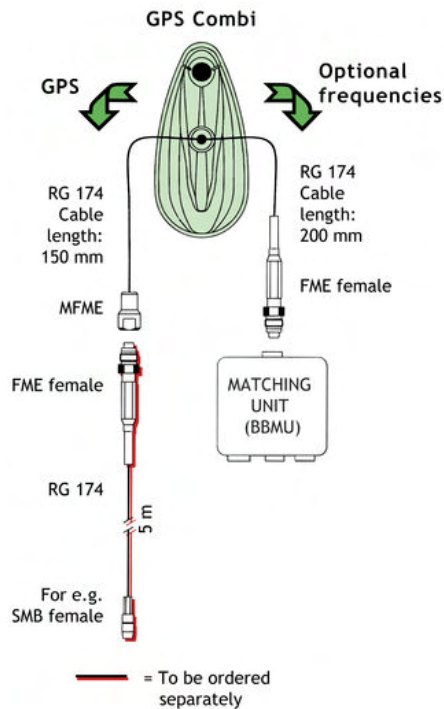
MOUNTING INSTRUCTIONS



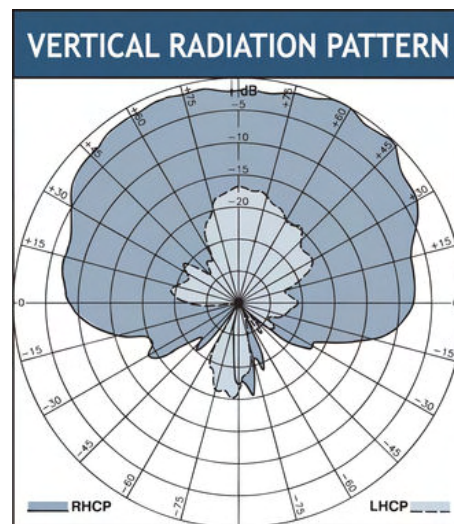
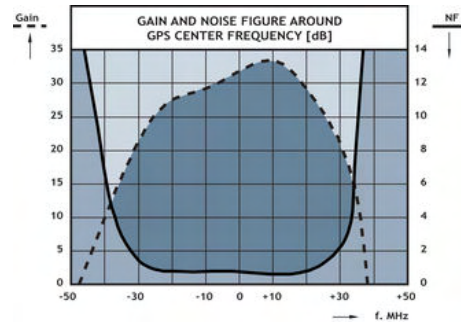
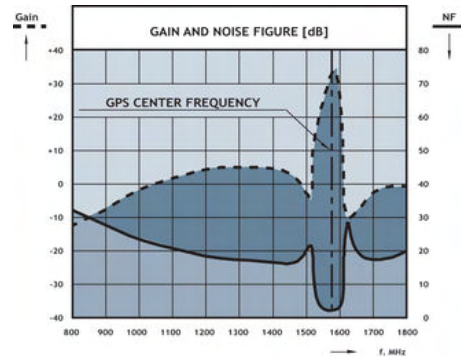
★ The whip should always be dismantled during car wash.

Do not use sealer on rubber gasket or other places.

CABLE MOUNTING



TYPICAL RESPONSE CURVES



PROCOM A/S reserve the right to amend specifications without prior notice.

01/06/2010