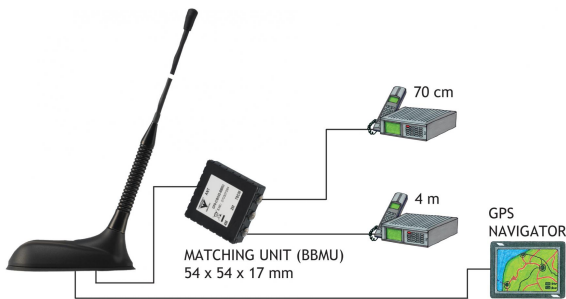


GPS-C 4/TETRA-S BBMU/...

Collinear Mobile Antenna for the 4m and TETRA Bands

DESCRIPTION

- GPS-antenna for fixed installations.
- External antenna whip mounted on the GPS-Combi mount.
- Full hemispherical coverage.
- Built-in high-gain, low-noise amplifier.
- Right-Hand Circular Polarization (RHCP).
- 5 V supply voltage (3 V and 12 V respectively available on request).
- DC supply via RF-connector.
- Polyethylene-covered flexible whip.
- Whip easily removable for car wash.
- Matching unit (BBMU) included.



ORDERING DESIGNATIONS

TYPE	PRODUCT NO.	ROOF THICKNESS
GPS-C 4/TETRA-S BBMU	132000139	Max. 2.0 mm
GPS-C 4/TETRA-S BBMU/7mm	132000129	3.5 - 7.5 mm

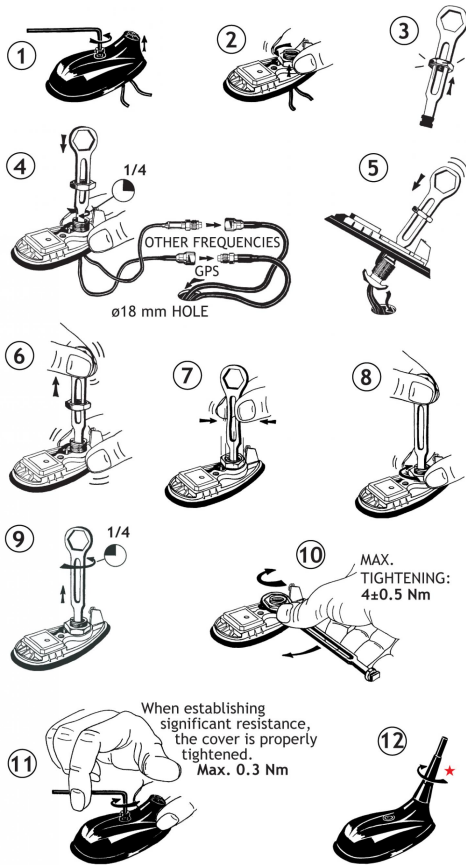
SPECIFICATIONS FOR WHIP

ELECTRICAL	
MODEL	GPS-C 4/TETRA-S BBMU/...
ANTENNA TYPE	Collinear mobile whip antenna
FREQUENCY	4 m: 74.2 - 87.5 MHz 70 cm: 380 - 400 MHz
SWR	74.2 - 77.7 and 84 - 87.5 MHz: ≤ 2.5 380 - 400 MHz: ≤ 2.0
IMPEDANCE	Nom. 50 Ω
POLARIZATION	Vertical
GAIN	4 m: approx. -3 dB 70 cm: approx. 1 dB (acc. to EIA RS-329-1)
MAX. POWER	15 W
MECHANICAL	
MATERIALS	Whip: Glass fibre whip with copper wire winding, polyethylene-covered Black-chromed brass Spring: Black-chromed stainless steel
COLOUR	Black
HEIGHT	670 mm
WEIGHT	60 g
MOUNTING	On the GPS-Combi mount

SPECIFICATIONS FOR GPS-COMBI MOUNT

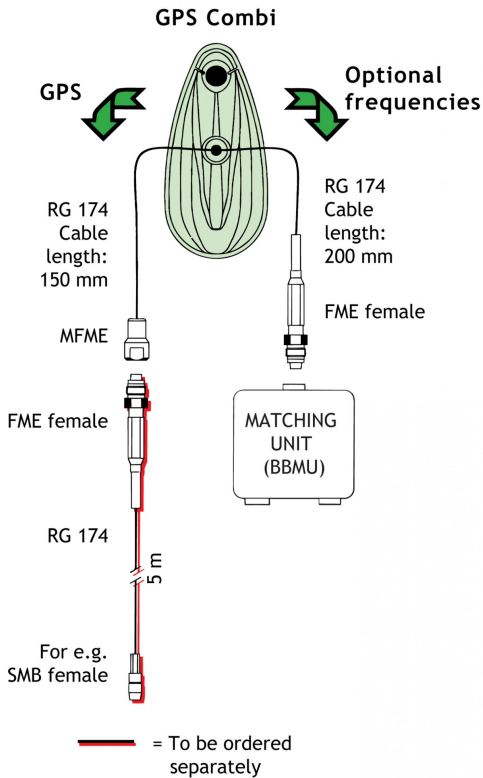
ELECTRICAL GENERAL SPECIFICATIONS	
MODEL	GPS-COMBI MOUNT
ANTENNA TYPE	Active patch antenna
FREQUENCY	1575 MHz
IMPEDANCE	Nom. 50 Ω
POLARIZATION	Circular right-hand
COVERAGE	Hemispherical
GAIN	28 dBic in axial direction (typ.)
CROSS-POLARIZATION ATT.	> 10 dB (typ.)
SELECTIVITY	> 45 dB down @ ± 45 MHz
BUILT-IN AMPLIFIER	
GAIN	> 30 dB (typ.)
NOISE FIGURE	< 1 dB (typ.)
P1 dB	Approx. +7 dBm
SWR (output)	≤ 2.0
SUPPLY VOLTAGE	5 \pm 0.5 VDC (3 V resp. 12 V on request)
CURRENT CONSUMPTION	Approx. 25 mA
MECHANICAL (ONLY FOR THE GPS-PART)	
MATERIALS	Cu-nite brass. Stainless steel Reinforced thermoplastic
ANTENNA COLOUR	Black
TEMP. RANGE	-35° C \rightarrow +75° C
CONNECTOR	FME (male for GPS) + FME (female for mobile antenna)
RECOMMENDED INSTALL. TORQUE	4 \pm 0.5 Nm
DIMENSIONS (H x L)	Approx. 30 x 89 mm
ROOF THICKNESS	Max. 2.0 mm or 3.5 - 7.5 mm
WEIGHT	Approx. 114 g
MOUNTING	\varnothing 18 mm dia. hole (For roof thickness 2.5 mm mounting hole should be \varnothing 18.5 mm dia.) For roof thickness 3.5 mm up to 7.5 mm mounting hole should be \varnothing 19 mm dia. Tools for mounting included

MOUNTING INSTRUCTIONS



★ The whip should always be dismantled during car wash.

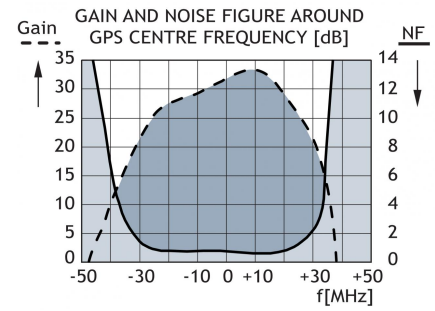
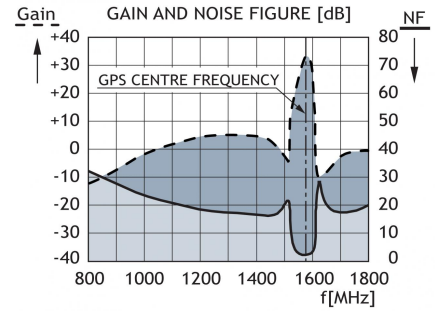
CABLE MOUNTING



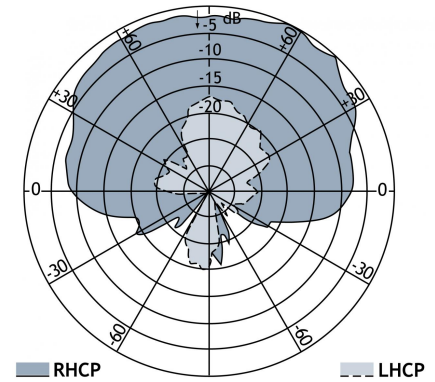
PLEASE NOTE

The cable between the GPS-C Mount and BBMU box must not be extended.

TYPICAL RESPONSE CURVES



VERTICAL RADIATION PATTERN



PROCOM A/S reserve the right to amend specifications without prior notice.
25/10/11