

# ML 3-ZP4

## Helical Mobile Antenna for the 80 MHz Band

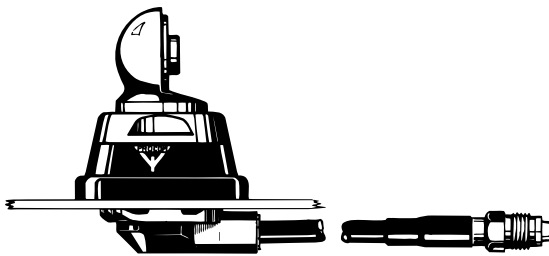
PROCOM



### DESCRIPTION:

- ★ Reduced-size quarter-wave antenna for all applications where height is a problem.
- ★ Ideal on busses, trucks, building-site machines, forest vehicles etc.
- ★ High efficiency due to the “continuous loading” helical principle.
- ★ Stainless steel ZP4-mount with ball-joint and wing screw whip-fastening system.
- ★ Simple mounting exclusively with access from the outside.
- ★ Delivered with 4 m cable permanently attached to the mount and terminated with FME-connector.

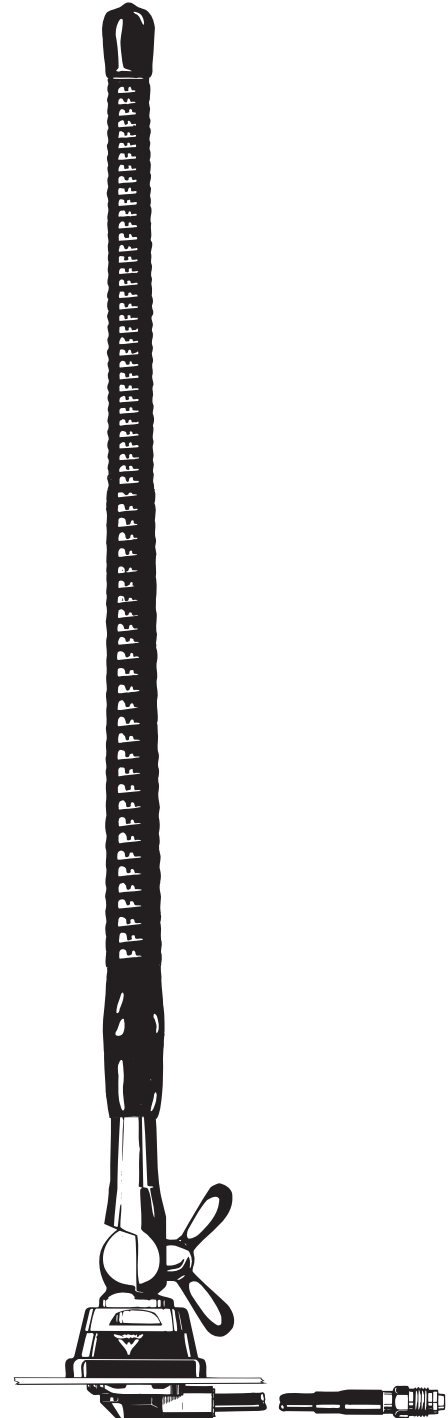
#### ZP4-Mount



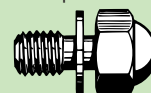
Please note that the ML 3-type ZP4-mount is provided with a built-in matching unit. Consequently, the mount cannot be used together with other whips.

### SPECIFICATIONS:

ELECTRICAL	
MODEL	ML 3-ZP4
ANTENNA TYPE	Shortened 1/4 $\lambda$ helical antenna
FREQUENCY	Tunable by cutting within: 66....88 MHz
IMPEDANCE	Nom. 50 $\Omega$
POLARISATION	Vertical
GAIN	Approx. -3 dB (acc. to EIA RS-329-1)
BAND WIDTH	$\geq 4$ MHz @ SWR $\leq 2.0$
SWR	$\leq 1.4$ @ f.res.
MAX. POWER	30 watts
MECHANICAL	
MATERIALS	Whip: Steel helix moulded in flexible thermoplastic rubber Chromed brass
	Mount: Chromed brass Environment-proof plastics Stainless steel
RECOMMENDED INSTALLATION TORQUE	7.5 $\pm$ 1 Nm
CABLE	4 m RG 58
COLOUR	Black/bright
HEIGHT	Approx. 37 cm
WEIGHT	Approx. 400 g
MOUNTING	21 mm dia. hole



Hat screw option:



For antenna delivered with hat screw instead of wing screw add a K to the antenna designation.

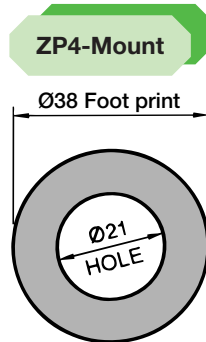
# ML 3-ZP4 Installation



This antenna is supplied with type ZP4-mount. The whip is fastened to the mount by means of our standard ball-joint and wing screw system. The adjustable ball-joint ensures that the whip can always be mounted in a vertical position independent of the angle of the installation spot.

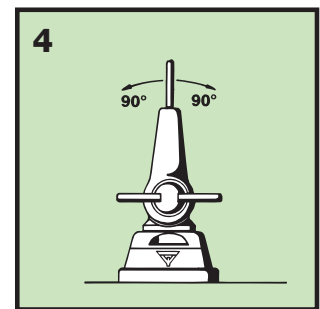
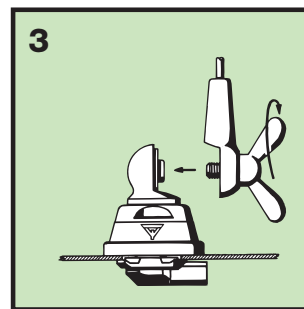
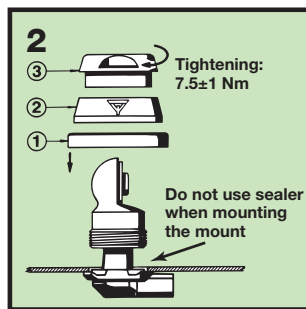
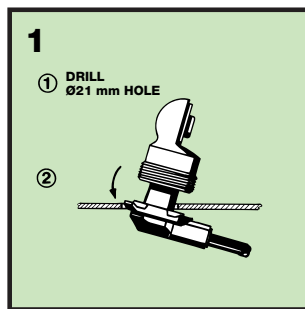
The ZP4-mount is particularly well suited for mounting on car-roofs because of its ability to be installed exclusively with access from the outside. However, the antenna can be installed anywhere on the car, as the ZP4-mount is equally well suited for mounting on e.g. trunk or wing.

## 1. INSTALLATION DIMENSIONS:



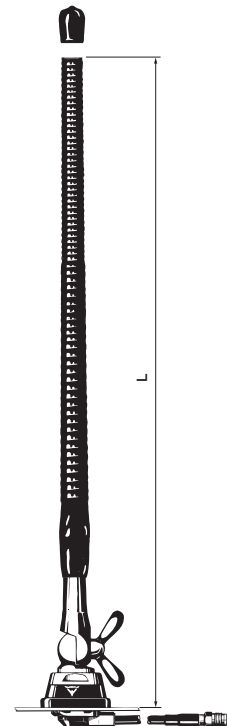
Build-in depth: 10.5 mm

## 2. INSTALLATION STEPS:



## 3. TUNING:

The antenna should always be post-adjusted using an SWR 3000 or the like. DO NOT cut too much at a time - one complete winding of the helix moves the antenna resonance considerably.



### PLEASE NOTE:

To make this antenna operate as efficiently as possible, a matching unit has been built into the antenna mount. Consequently, neither mount nor whip can be used together with other mounts/whips.