

HX 27-KZ

Very Short Helical Mobile Antenna
for the 27 MHz CB-Band

PROCOM

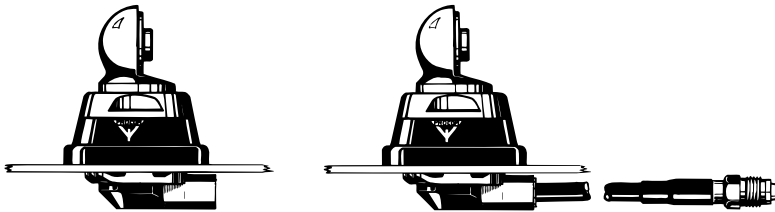


DESCRIPTION:

- ★ Ultra-short (0.03λ) mobile antenna for short-distance communication.
- ★ Ideal where normal-sized antennas cannot be used, as on building-site machines, forest vehicles etc.
- ★ Amazingly good performance despite a very low height, due to top loading.
- ★ Stainless steel Z-mount with ball-joint and wing screw whip-fastening system.
- ★ Simple mounting exclusively with access from the outside.
- ★ Ready-tuned and tested from the factory to assure minimum SWR.
- ★ Choice between two connection principles:
 - ★ Z-mount : FME-connection (supplied without cable).
 - ★ ZP4-mount : Permanently attached 4 m cable terminated with FME-connector.

Z-Mount

ZP4-Mount

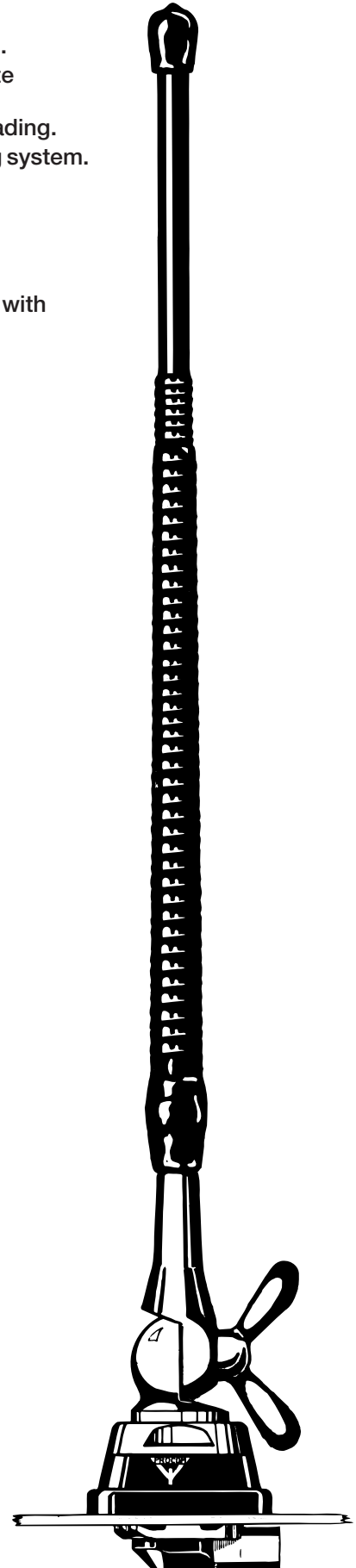


ORDERING DESIGNATIONS:

MOUNT VERSION	Z-mount with FME-system	ZP4-mount with 4 m cable and FME connector
ANTENNA TYPE NO.	HX 27-KZ	HX 27-KZP4

SPECIFICATIONS:

ELECTRICAL	
MODEL	HX 27-KZ
ANTENNA TYPE	Toploaded helical mobile antenna
FREQUENCY	27 MHz CB-band
IMPEDANCE	Nom. 50Ω
POLARISATION	Vertical
BAND WIDTH	≥ 250 kHz @ SWR ≤ 2.0
SWR	≤ 1.3 @ f. res.
MAX. POWER	5 watts
MECHANICAL	
MATERIALS	Whip: Electroplated steel helix moulded in elastomer Chromed brass
	Mount: Chromed brass Environment-proof plastics Stainless steel
RECOMMENDED INSTALLATION TORQUE	7.5 ± 1 Nm
COLOUR	Black
HEIGHT	Approx. 34 cm
WEIGHT	Approx. 330 g
MOUNTING	21 mm dia. hole



PROCOM A/S reserve the right to amend specifications without prior notice.

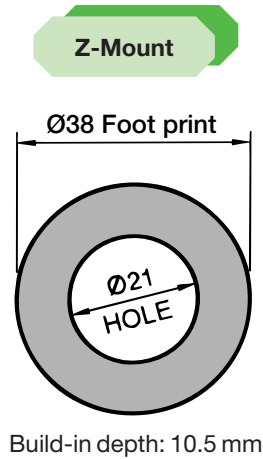
HX 27-KZ Installation



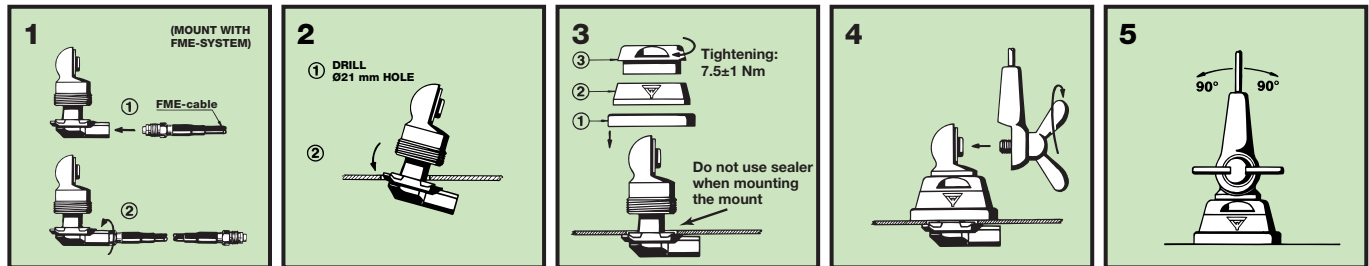
This antenna is provided with type Z-mount. The whip is fastened to the mount by means of our standard ball-joint and wing screw system. The adjustable ball-joint ensures that the whip can always be mounted in a vertical position independent of the angle of the installation spot.

The Z-mount is particularly well suited for mounting on car-roofs because of its ability to be installed exclusively with access from the outside. However, the antenna can be installed anywhere on the car, as the Z-mount is equally well suited for mounting on e.g. trunk or wing.

1. INSTALLATION DIMENSIONS:



2. INSTALLATION STEPS:



3. TUNING:

The antenna is factory-tuned for minimum SWR.
No additional tuning is required.