

DESCRIPTION:

- ★ Full hemispherical coverage due to quadrifilar helix antenna element.
- ★ Built-in high gain, low noise amplifier.
- ★ Input filter for thorough RF-overload protection.
- ★ Right-hand circular polarisation (RHCP).
- ★ High rejection of cross-polarised reflections prevents fading caused by multipath propagation.
- ★ 5 V supply voltage (3 V respectively 12 V available on request) .
- ★ DC supply via RF-connector.
- ★ EMC tested to IEC 801 and IEC 255.
- ★ Total design carried out to make the antenna withstand tough environments.
- ★ Comprehensive range of accessory mounting brackets available.

SPECIFICATIONS:

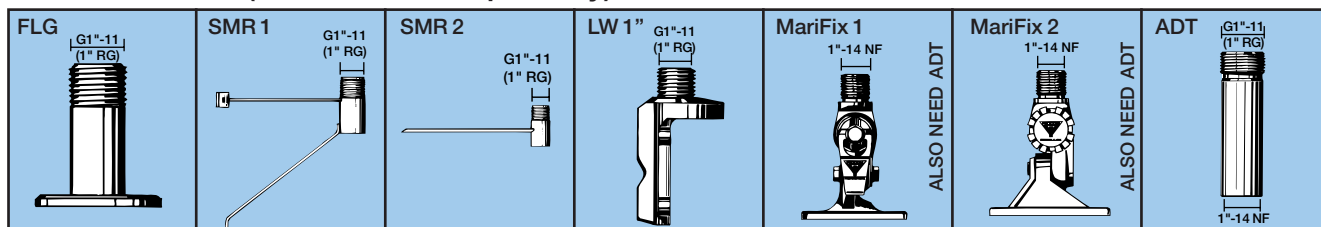
ELECTRICAL	
General specifications	
MODEL	GPS 4/...
ANTENNA TYPE	Quadrifilar helix active antenna
FREQUENCY	1575 MHz
IMPEDANCE	Nom. 50 Ω
POLARISATION	Circular right-hand
COVERAGE	Hemispherical
GAIN (in axial direction)	> 32 dBi
CROSS-POLARISATION ATT.	> 10 dB
Built-in amplifier	
GAIN	> 30 dB
NOISE FIGURE	< 3 dB (incl. input filter). Typ. approx. 3 dB
1 dB COMPRESSION POINT	> 10 dBm
SELECTIVITY	> 20 dB down at ± 100 MHz
OUT OF BAND ATTENUATION	0.03– 1 GHz : > 40 dB down 2 –10 GHz : > 40 dB down
SWR (output)	< 2.0
SUPPLY VOLTAGE	GPS 4: 5±0.5 V DC GPS 4/3 V: 3-3.5 V DC GPS 4/12V: 9–15 V DC
CURRENT CONSUMPTION	Approx. 44 mA
EMC	Full protection (IEC 801, IEC 255)
MECHANICAL	
MATERIALS	Antenna dome: Weather-resistant low-loss plastic
ANTENNA COLOUR	Marine white
INSULATION	Connector ground terminal is galvanically insulated from the mounting hardware
WIND SURFACE	Approx. 0.0072 m ²
MAX. WIND SPEED	200 km/h
WIND LOAD	Approx. 9.6 N @ 150 km/h
TEMP. RANGE	-50° C → + 70° C
CONNECTOR	FME-male (pin) (can be supplied with TNC upon request)
SUGGESTED DOWNLEAD CABLE	< 10 m : RG 58 10-30 m : RG 213
TOTAL HEIGHT	Approx. 23 cm
ANTENNA DIA.	33 mm
WEIGHT	Approx. 150 g
MOUNTING	Vertical on 1" water pipe or on PROCOM 1" mounting brackets (see accessories below)



MODEL SURVEY:

TYPE NO.	SUPPLY VOLTAGE
GPS 4	5 V DC (4.5–5.5 V)
GPS 4/3 V	3 V DC (3-3.5 V)
GPS 4/12 V	12 V DC (9–15 V)

ACCESSORIES: (to be ordered separately)



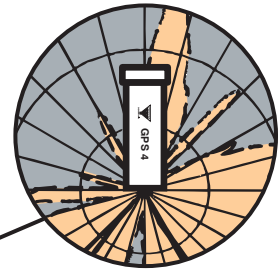
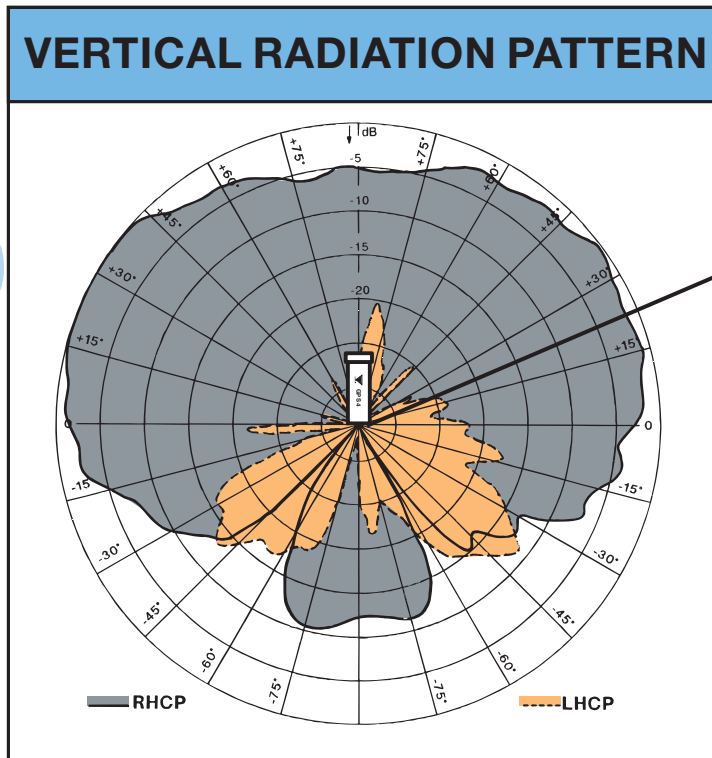
PROCOM A/S reserve the right to amend specifications without prior notice.

GPS 4/...

Active Receiving Antenna for the 1575 MHz NAVSTAR GPS Satellite Navigational System



VERTICAL RADIATION PATTERN



GPS

AIS

GPS

FME-SYSTEM ACCESSORIES

FME-CONNECTORS

CONNECTOR	ORDER NO.
FME-FME	FME-FME
Prolongation	FMEP
N	FME-N
FSMA	FME-FSMA
BNC	FME-BNC
TNC	FME-TNC
UHF	FME-UHF
Mini-UHF	FME-MUHF
Elbow-MUHF	FME-EMUHF
Elbow-BNC	FME-EBNC
Elbow-TNC	FME-ETNC
SMA	FME-SMA

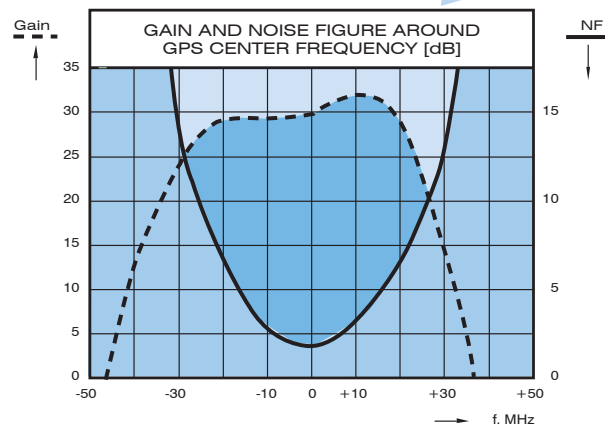
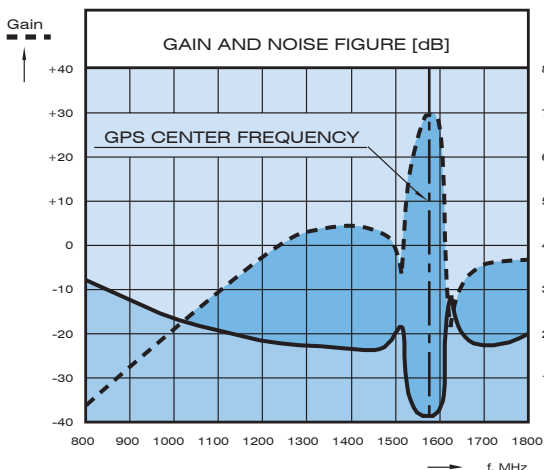
FME-SYSTEM ACCESSORIES

FME-CABLES

LENGTH	TYPE NO.
1m	1m FME
2m	2m FME
3m	3m FME
4m	4m FME
5m	5m FME
6m	6m FME
4m white	4m FME-white
6m white	6m FME-white
12m white	12m FME-white
18m white	18m FME-white

For further information about other types of FME-cables please compare the cable data sheets under accessories in our catalogue.

TYPICAL RESPONSE CURVES:



AIS