

FILTERS

BPF 2/3-150...

Highly Selective Band-Pass Filter for the 2 m Band with High Power-Handling Capability (150 watts)

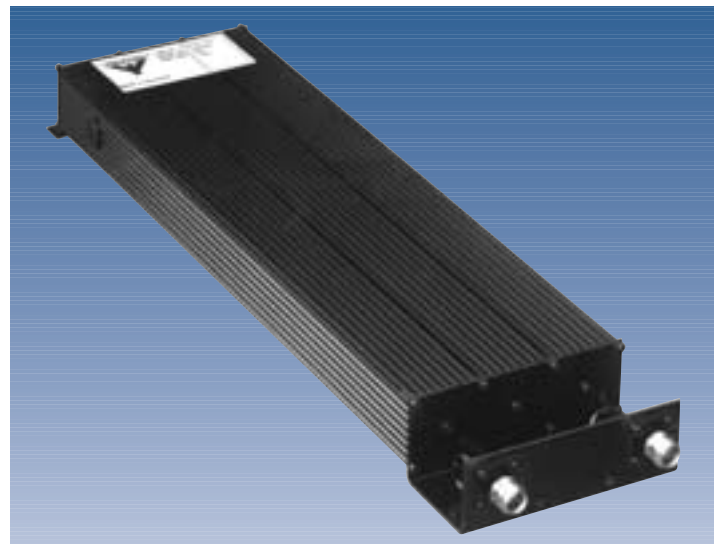
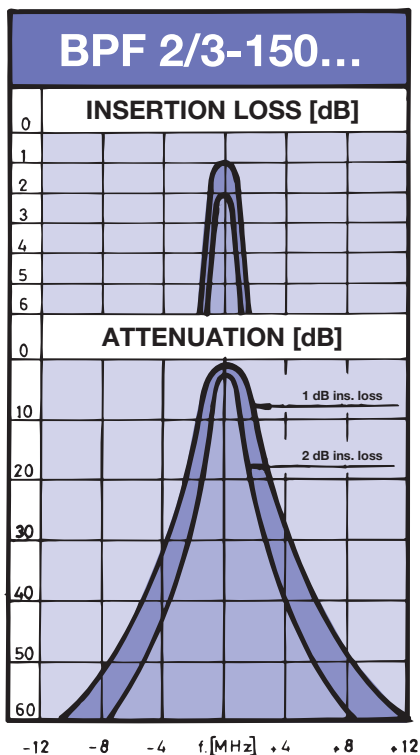


DESCRIPTION:

- ★ This band-pass filter is mainly applied to prevent interference between transceivers with narrow frequency spacing which are operating on antennas installed very close to each other.
- ★ One of the transmitters may cause intermodulation in the output amplifier of the other transmitter, or the presence of one transmitter might "block" the contrary receiver or desense it because of excess sideband noise.
- ★ The BPF 2/3-150... consists of 3 full-size quarter wavelength cavities with adjustable capacitive coupling between the resonators. This filter is applied when other available band-pass filters or pass-reject filters do not provide adequate power handling capability, or lack in attenuation at narrow separations.
- ★ The filter has a very steep rolloff between the pass-range and the stop-band. This rolloff can be made even steeper by sacrificing on insertion loss. This "trade-off" may be necessary by very small separations or by high required stop-band attenuation. Please note that the full power rating of 150 watts can only be kept when keeping insertion loss below 1 dB. If insertion loss is raised to 2 dB, maximum allowable input power is 75 watts.
- ★ Another feature of this filter is its ability to be tuned with a certain pass-range bandwidth.
- ★ The filter is delivered in two basic models: Model BPF 2/3-150 L can be applied within the band 136-154 MHz and model BPF 2/3-150 H within the band 152-175 MHz.
- ★ The housing is made of extruded aluminium, the chassis of passivated steel, and teflon insulation has been used in the coaxial cables and in the connectors. The filter is black vinyl coated to prevent corrosion.

TYPE NO.	TUNING RANGE
BPF 2/3-150 L	136-154 MHz
BPF 2/3-150 H	152-175 MHz

TYPICAL RESPONSE CURVES:



SPECIFICATIONS:

ELECTRICAL	
MODEL	BPF 2/3-150...
FILTER TYPE	Band-pass filter
FREQUENCY (tuning range)	BPF 2/3-150 L : 136-154 MHz BPF 2/3-150 H : 152-175 MHz
MAX. INPUT POWER	@ max. 1 dB insertion loss: 150 watts @ max. 2 dB insertion loss: 75 watts
ATTENUATION AROUND PASS-BAND	See curves
OUT OF BAND REJECTION	See curves
IMPEDANCE	Nom. 50 Ω
SWR	≤ 1.4
MECHANICAL	
TEMP. RANGE	-30° C → +60° C
FREQ. STABILITY	Approx. 18 ppm/° C
CONNECTORS	N-female
LENGTH (INCL. CONN.)	Type L: 550 mm Type H: 535 mm
WIDTH	125 mm
HEIGHT	50 mm
WEIGHT	Approx. 2.1 kg

ORDERING INFORMATION:

The BPF 2/3-150... is delivered factory tuned. Depending on the nature of the problem the band-pass filter has to solve, please specify the relevant of the following data when ordering: Centre frequency, operating frequency of disturbed or disturbing transmitter, required attenuation at stop-frequency, tolerable insertion loss and, optionally: pass range bandwidth.

PROCOM A/S reserve the right to amend specifications without prior notice.