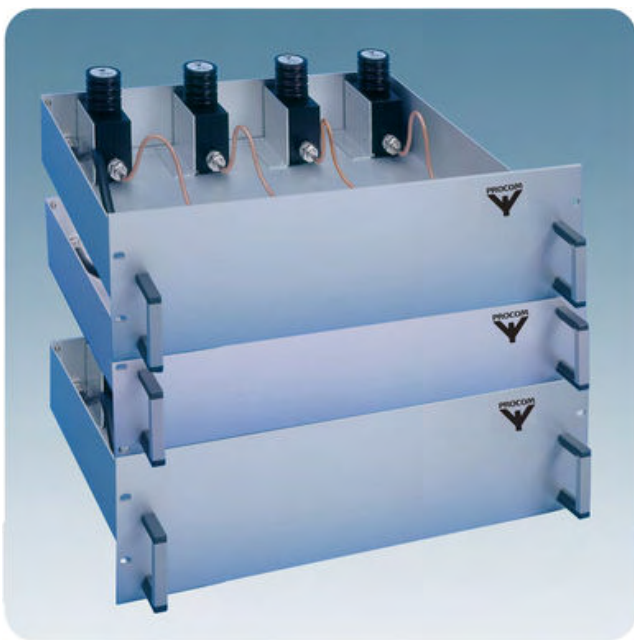


# PRO-PHY450-8SI-...

## 8-Channel Hybrid Combiner

### DESCRIPTION

- The PRO-PHY series of hybrid combiners has been designed to help identify the optimum solution for combining several transmitters into one antenna.
- All hybrid combiners are suitable for 19" rack mounting.
- Single isolators fitted as standard.
- A range of racks and cabinets are available.
- Option: Maximum input power of 35 W (PRO-PHY...-8SI-35) or 100 W (PRO-PHY...-8SI-100).
- Please specify the frequencies for TX when ordering.



### ORDERING DESIGNATIONS

TYPE	PRODUCT NO.
PRO-PHY450-8SI-35	210001213
PRO-PHY450-8SI-100	210001214

### SPECIFICATIONS

ELECTRICAL	
MODEL	PRO-PHY450-8SI-...
TX FREQUENCY	380 - 470 MHz
MAX. INPUT POWER	35/100 W
TX-TX SPACING, $\Delta_{TX}$	< 11 MHz
TYP. INSERTION LOSS	11.1 dB
TX-TX ISOLATION	> 65 dB
IMPEDANCE	Nom. 50 $\Omega$
SWR	$\leq 1.5$
MECHANICAL	
TEMP. RANGE	-30° C $\rightarrow$ +60° C
CONNECTORS	N-female
DIMENSIONS (W x H x D)	19" x 8 HU x 400 mm (483 x 356 x 400 mm)
WEIGHT	Approx. 30 kg



PROCOM A/S reserve the right to amend specifications without prior notice.

22/04/2010