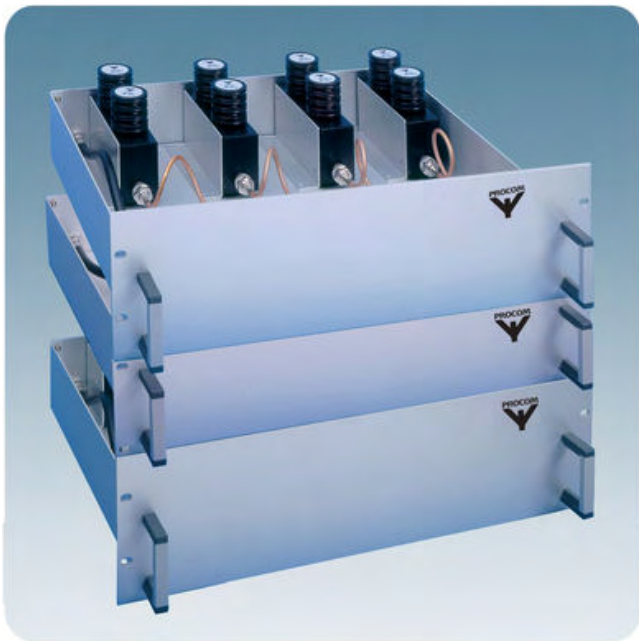


PRO-PHY85-8DI-...

8-Channel Hybrid Combiner

DESCRIPTION

- The PRO-PHY series of hybrid combiners has been designed to help identify the optimum solution for combining several transmitters into one antenna.
- All hybrid combiners are suitable for 19" rack mounting.
- Dual isolators fitted as standard.
- A range of racks and cabinets are available.
- Option: Maximum input power of 35 W (PRO-PHY...-8DI-35) or 100 W (PRO-PHY...-8DI-100).
- Please specify the frequencies for TX when ordering.



ORDERING DESIGNATIONS

TYPE	PRODUCT NO.
PRO-PHY85-8DI-35	210001136
PRO-PHY85-8DI-100	210001137

SPECIFICATIONS

ELECTRICAL	
MODEL	PRO-PHY85-8DI-...
TX FREQUENCY	66 - 88 MHz
MAX. INPUT POWER	35/100 W
TX-TX SPACING, Δ_{TX}	< 3 MHz
TYP. INSERTION LOSS	11.5 dB
TX-TX ISOLATION	> 90 dB
IMPEDANCE	Nom. 50 Ω
SWR	≤ 1.5
MECHANICAL	
TEMP. RANGE	-30° C \rightarrow +60° C
CONNECTORS	N-female
DIMENSIONS (W x H x D)	19" x 8 HU x 400 mm (483 x 356 x 400 mm)
WEIGHT	Approx. 35 kg



PROCOM A/S reserve the right to amend specifications without prior notice.

02/07/2009