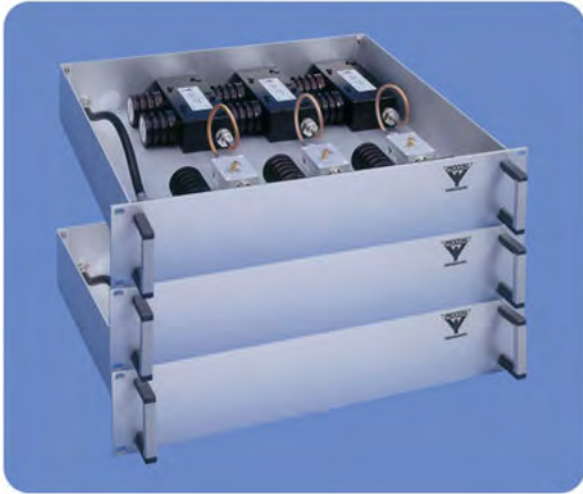


# PRO-PHY450-6DI-100

## 6-Channel Hybrid Combiner for 100 W

### DESCRIPTION

- The PRO-PHY series of hybrid combiners has been designed to help identify the optimum solution for combining several transmitters into one antenna.
- All hybrid combiners are suitable for 19" rack mounting.
- Dual isolators fitted as standard.
- Maximum input power of 100 W.
- Please specify the frequencies for TX when ordering.



### ORDERING DESIGNATIONS

TYPE	PRODUCT NO.
PRO-PHY450-6DI-100	210000901

### SPECIFICATIONS

ELECTRICAL	
MODEL	PRO-PHY450-6DI-100
TX FREQUENCY	380 - 470 MHz
MAX. INPUT POWER	100 W
TX-TX SPACING, $\Delta$ TX	< 11 MHz
TYP. INSERTION LOSS	9.1 dB
TX-TX ISOLATION	> 90 dB
IMPEDANCE	Nom. 50 $\Omega$
SWR	$\leq 1.5$
MECHANICAL	
TEMP. RANGE	-30° C $\rightarrow$ +60° C
CONNECTORS	N-female
DIMENSIONS (H x W x L)	6HU x 483 x 500 mm (267 x 483 x 500 mm)
(H x W x L) Alternative	8HU x 483 x 400 mm (356 x 483 x 500 mm)
WEIGHT	Approx. 25 kg



PROCOM A/S reserve the right to amend specifications without prior notice.

21/10/11