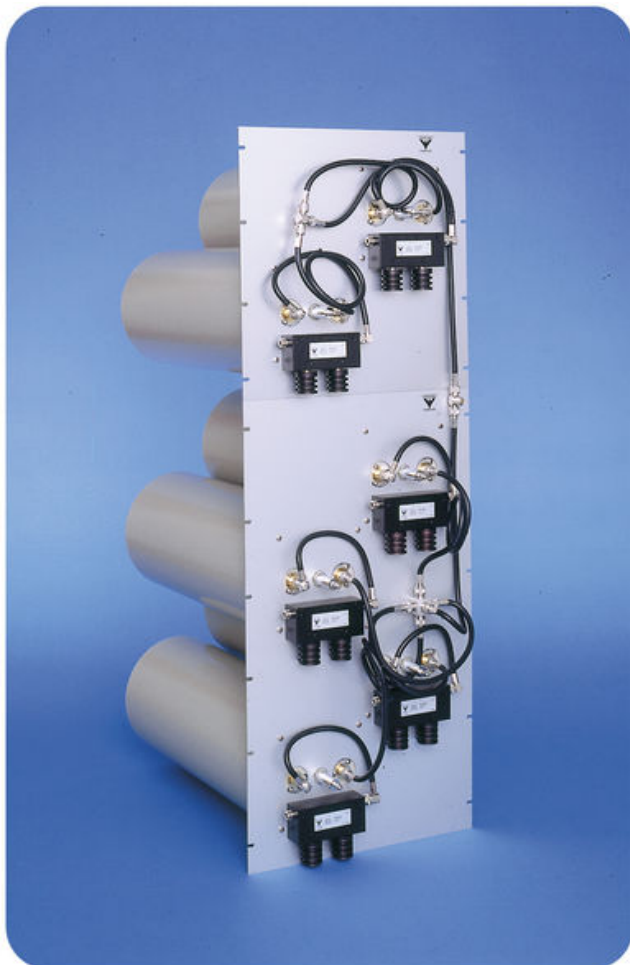


PRO-CAV150-6

6-Channel Cavity Combiner

DESCRIPTION

- The PRO-CAV series of cavity combiners has been designed to help identify the optimum solution for combining several transmitters into one antenna.
- All cavity combiners are suitable for 19" rack mounting.
- All cavities are 250 mm dia. Dual isolators fitted as standard.
- A range of racks and cabinets are available.
- Please specify the frequencies for TX when ordering.



SPECIFICATIONS

ELECTRICAL	
MODEL	PRO-CAV150-6
TX FREQUENCY	136 - 175 MHz
MAX. INPUT POWER	150 W
TX-TX SPACING, Δ_{TX}	> 75 kHz
TYP. INSERTION LOSS	3.5 dB @ $\Delta_{TX} = 150$ kHz
TX-TX ISOLATION	> 75 dB
IMPEDANCE	Nom. 50 Ω
SWR	≤ 1.5
MECHANICAL	
TEMP. RANGE	-30° C \rightarrow +60° C
FREQ. STABILITY	Approx. 0.8 ppm/° C
CONNECTORS	N-female
DIMENSIONS (W x H x D)	19" x 30 HU x 600 (483 x 1333 x 600 mm)
WEIGHT	Approx. 36.4 kg



PROCOM A/S reserve the right to amend specifications without prior notice.

24/03/2009