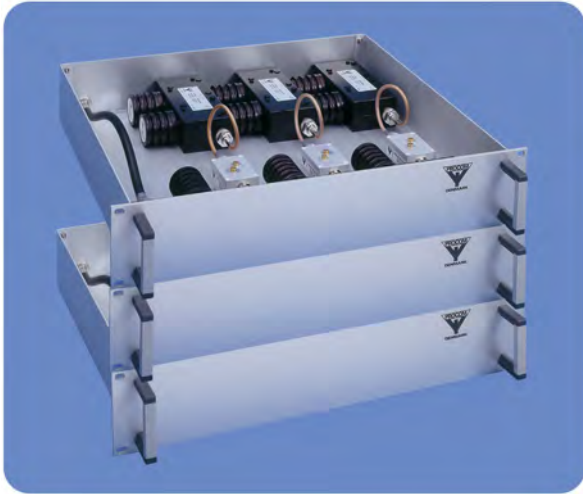


PRO-PHY85-6DI-100

6-Channel Hybrid Combiner for 100 W

DESCRIPTION

- The PRO-PHY series of hybrid combiners has been designed to help identify the optimum solution for combining several transmitters into one antenna.
- All hybrid combiners are suitable for 19" rack mounting.
- Dual isolators fitted as standard.
- Maximum input power of 100 W.
- Please specify the frequencies for TX when ordering.



ORDERING DESIGNATIONS

TYPE	PRODUCT NO.
PRO-PHY85-6DI-100	210001265

SPECIFICATIONS

ELECTRICAL	
MODEL	PRO-PHY85-6DI-100
TX FREQUENCY	66 - 88 MHz
MAX. INPUT POWER	100 W
TX-TX SPACING, Δ TX	< 3 MHz
TYP. INSERTION LOSS	9.2 dB
TX-TX ISOLATION	> 90 dB
IMPEDANCE	Nom. 50 Ω
SWR	\leq 1.5
MECHANICAL	
TEMP. RANGE	-30° C \rightarrow +60° C
CONNECTORS	N-female
DIMENSIONS (H x W x L)	6HU x 483 x 500 mm (267 x 483 x 500 mm)
(H x W x L) Alternative	8HU x 483 x 400 mm (356 x 483 x 500 mm)
WEIGHT	Approx. 26 kg



PROCOM A/S reserve the right to amend specifications without prior notice.

06/10/11