

# DUMMY LOADS AND ATTENUATORS

## COAXIAL LOADS (I) 0–2 GHz



### DESCRIPTION:

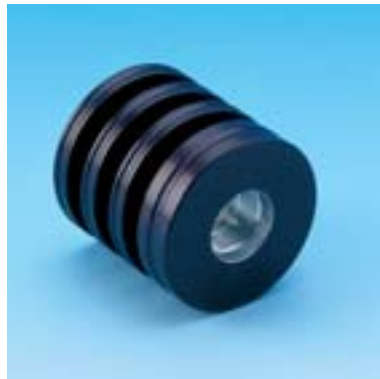
- ★ This series of coaxial loads have very low SWR and are especially suitable for use with:
  - Power Hybrids.
  - Isolators.
  - Coaxial Transmission Lines.
  - Power Monitors.
  - Wattmeters.
  - Receiver Multicouplers.
- ★ The surface of the dummy loads is black anodized.



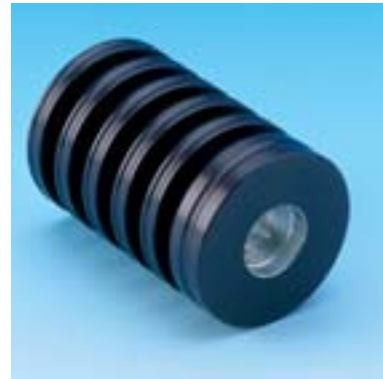
PRL 1W



PRL 3W



PRL 35W



PRL 60W

### SPECIFICATIONS:

MODEL	ELECTRICAL			
	PRL 01W	PRL 3 W	PRL 35 W	PRL 60 W
FREQUENCY RANGE	0–1 GHz	0–1 (3) GHz	0–1 (2) GHz	0–1 (2) GHz
MAX. INPUT POWER	1 W	3 W	15 W	30 W
MAX. INPUT POWER WITH EXTRA COOLING	1 W	3 W	30 W	60 W
IMPEDANCE	Nom. 50 Ω	Nom. 50 Ω	Nom. 50 Ω	Nom. 50 Ω
SWR	< 1.5	< 1.15 (≤ 1.5)	< 1.15 (≤ 1.5)	< 1.15 (≤ 1.5)
TEMP. RANGE	MECHANICAL			
	-30° C → +60° C	-30° C → +60° C	-30° C → +60° C	-30° C → +60° C
CONNECTORS	N-male	N-male	N-male	N-male
DIMENSIONS	ø21 x 24 mm	ø21.2 x 39.5 mm	ø40 x 40 mm	ø40 x 60 mm
WEIGHT	Approx. 25 g	Approx. 50 g	Approx. 105 g	Approx. 180 g

PROCOM A/S reserve the right to amend specifications without prior notice.