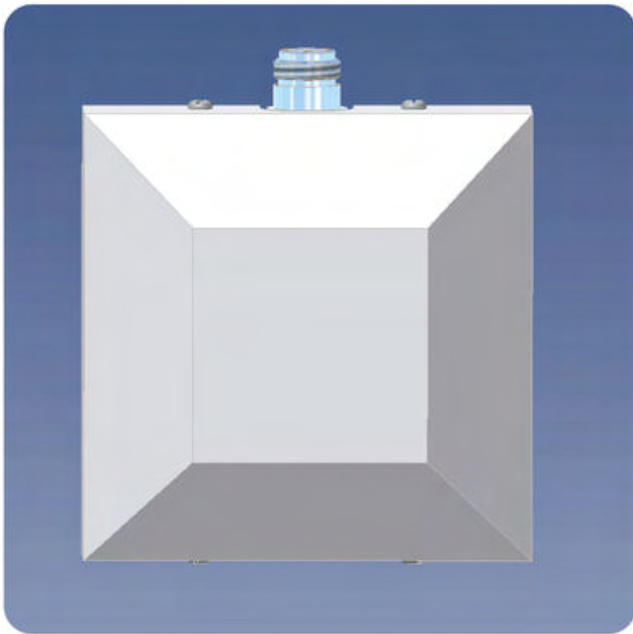


PCPI DCS/UMTS

Indoor Right Hand Circular Polarised Patch Antenna for mounting on Wall or Ceiling

DESCRIPTION

- Low profile antenna for the 1710 - 1880 MHz and 1900 - 2200 MHz band.
- PCPI DCS/UMTS is a 2 λ Right Hand Circular Polarised patch antenna for indoor use.
- Circular polarisation is chosen to avoid out-of-phase signals.
- Specially designed for closed rooms.
- Covers the DCS frequency range 1710 - 1880 MHz and the UMTS frequency range 1900 - 2200 MHz with a radiation of approx. 5 dBic 3 dBd.
- The antenna is carefully sealed with a discreet white cover.
- The connector is placed at one side to enable mounting close to a wall or a ceiling.



ORDERING DESIGNATIONS

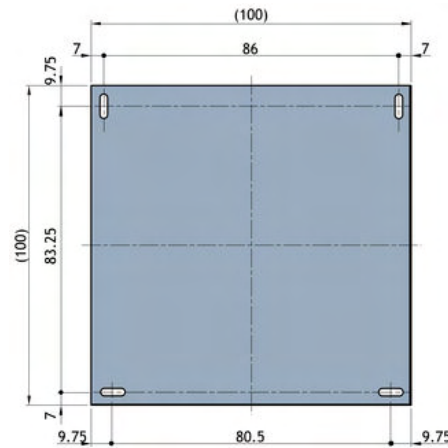
TYPE	PRODUCT NO.
PCPI DCS/UMTS	100000242

SPECIFICATIONS

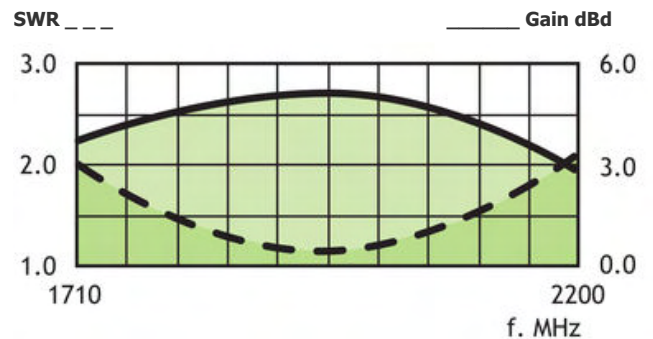
ELECTRICAL	
MODEL	PCPI DCS/UMTS
ANTENNA TYPE	Right Hand Circular Polarised patch antenna
FREQUENCY	DCS: 1710 - 1880 MHz UMTS: 1900 - 2200 MHz
IMPEDANCE	Nom. 50 Ω
POLARISATION	Circular
GAIN	Approx. 5 dBic 3 dBd \pm 2 dB
HALF-POWER BEAMWIDTH	Approx. 70° (H- and E-plane)
SWR	\leq 2.5
MAX. POWER	50 W
MECHANICAL	
CONNECTOR	N-female
COLOUR	Marine white
MATERIALS	Cover: PS Chassis: Aluminium
SIZE (L x W)	Approx. 104 x 104 mm
HEIGHT	Approx. 40 mm
WEIGHT	Approx. 0.2 kg
MOUNTING	For mounting on wall or ceiling \varnothing 4.5 x 10 mm (4 holes)

MOUNTING DETAILS

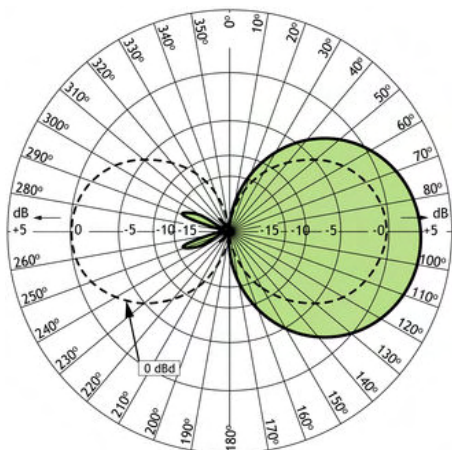
(Dimensions excl. cover)



TYPICAL GAIN AND SWR CURVES

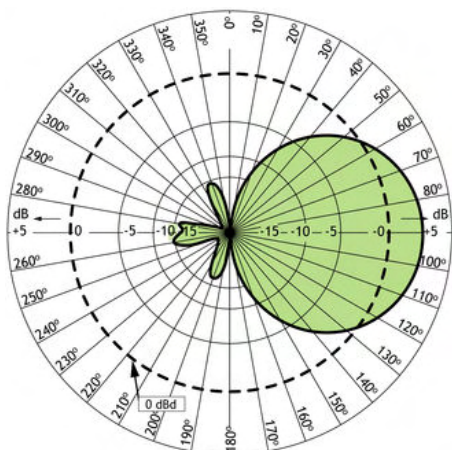


TYPICAL RADIATION PATTEN (E-PLAN)



This curve shows the radiation patterns in the vertical plane.

TYPICAL RADIATION PATTEN (H-PLAN)



This curve shows the radiation patterns in the horizontal plane (horizontal coverage).



PROCOM A/S reserve the right to amend specifications without prior notice.
17/12/2009