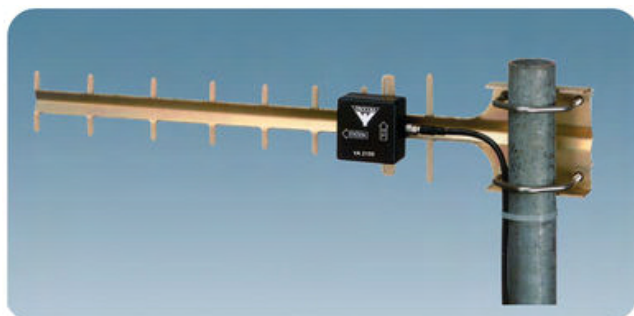


# YA 2100

Low-Cost 10 dB Directional Antenna for Networks in the 2100 MHz Band

## DESCRIPTION

- Low-cost and low-weight directional antenna.
- Approx. 10 dBi gain.
- "Built-in" mounting bracket.
- Supplied with fittings and bolts for mounting on 30 - 50 mm diameter mast tube.



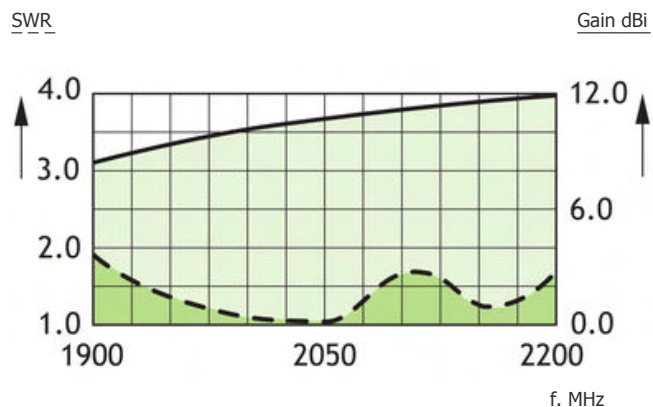
## ORDERING DESIGNATIONS

TYPE	PRODUCT NO.
YA 2100	130 001 553

## SPECIFICATIONS

ELECTRICAL	
MODEL	YA 2100
ANTENNA TYPE	9-element Yagi-antenna
FREQUENCY	1900 – 2200 MHz
IMPEDANCE	Nom. 50 $\Omega$
POLARIZATION	Linear (vertical or horizontal dep. on orientation)
GAIN	10 dBi 8 dBd
FRONT-TO-BACK-RATIO	$\geq 15$ dB
HALF-POWER BEAMWIDTH	Approx. 35° (E-plane) Approx. 45° (H-plane)
BANDWIDTH	300 MHz
SWR	$\leq 1.8$ @ 1.9 - 2.2 GHz
MAX. POWER	25 W
MECHANICAL	
MATERIALS	Antenna: Gold aludine, Aluminium Fittings: Stainless steel
COLOUR	Aludine "gold"
TOTAL LENGTH	570 mm
MAX. ELEMENT HEIGHT	100 mm
WEIGHT	300 g (incl. bolts)
CONNECTORS	FME-connector (cable to be ordered separately)
MOUNTING	On 30 – 50 mm dia. mast tube

## TYPICAL SWR AND GAIN CURVES

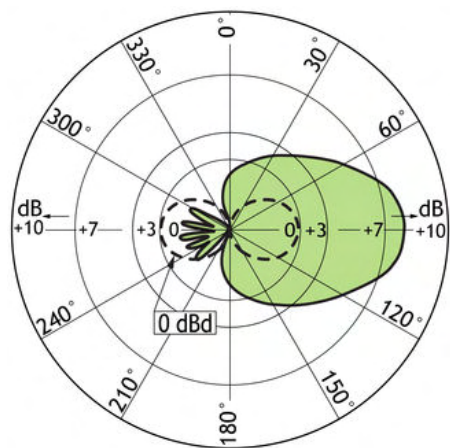


With the YA 2100 you will experience a significant improvement of the quality of your communication on the 2100 MHz networks.

## INSTALLATION STEPS

- Mount the antenna on a 30-50 mm diameter mast tube using the accompanying fittings and bolts (see illustration overleaf). The antenna is to be oriented as indicated on the connection box of the antenna.
- Direct the antenna towards the nearest base station for the 2100 MHz network in question. The correct direction may be determined using the field strength indicator telephone:
  - Mount the antenna on your mast.
  - Rotate the antenna (in the horizontal plane) while observing the field strength indicator.
  - Choose the direction in which the highest field strength level is observed and fasten the antenna.

TYPICAL RADIATION PATTERN (E-PLANE)



TYPICAL RADIATION PATTERN (H-PLANE)



PROCOM A/S reserve the right to amend specifications without prior notice.

06/08/2010