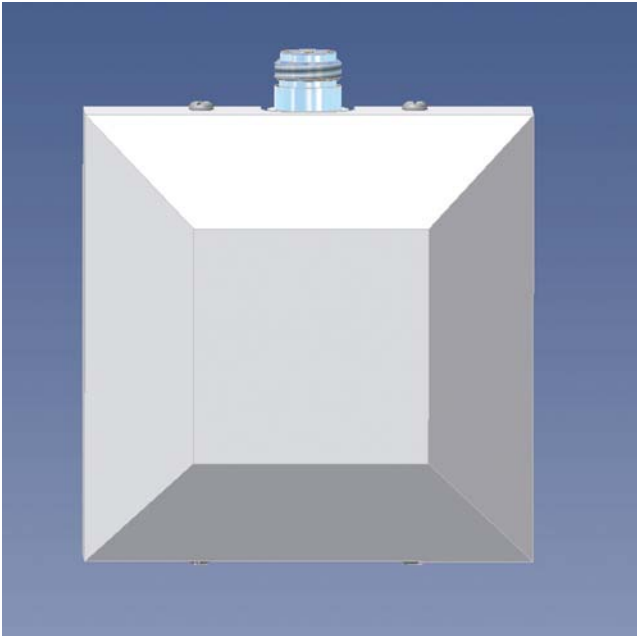


PCPI PCS

Indoor Right Hand Circular Polarised Patch Antenna for mounting on Wall or Ceiling

DESCRIPTION

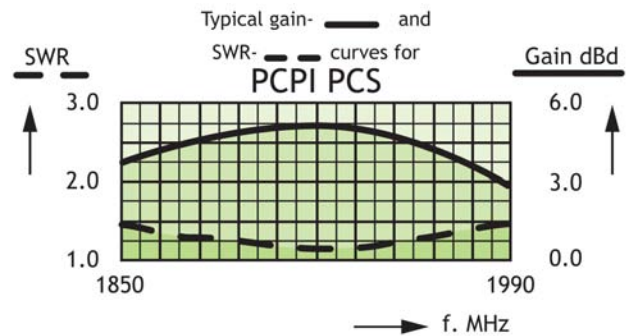
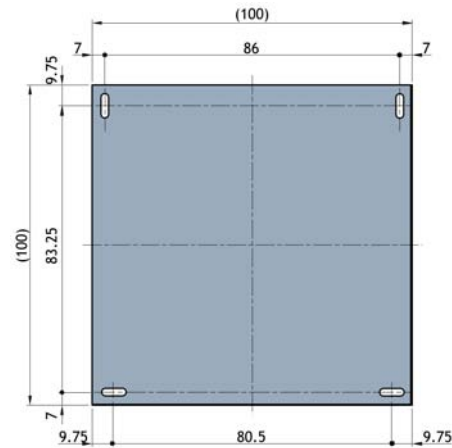
- Low profile antenna for the 1850 - 1990 MHz band.
- PCPI PCS is a Right Hand Circular Polarised patch antenna for indoor use.
- Circular polarisation is chosen to avoid out-of-phase signals.
- Specially designed for closed rooms.
- Covers the PCS frequency range 1850 - 1990 MHz with a radiation of approx. 5 dBic 3 dBd.
- Full size 2λ circular patch antenna.
- The antenna is carefully sealed with a discreet white cover.
- The connector is placed at one side to enable mounting close to a wall or a ceiling.

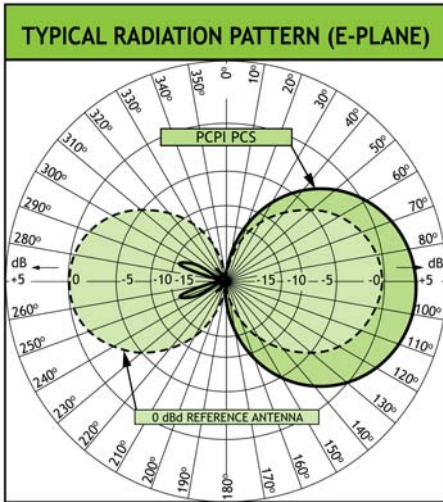


SPECIFICATIONS

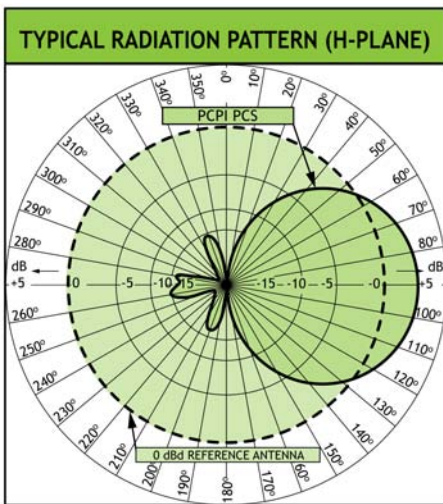
ELECTRICAL	
MODEL	PCPI PCS
ANTENNA TYPE	Right Hand Circular Polarised patch antenna
FREQUENCY	1850 - 1990 MHz
IMPEDANCE	Nom. 50 Ω
POLARISATION	Circular
GAIN	Approx. 5 dBic 3 dBd \pm 2 dB
HALF-POWER BEAMWIDTH	Approx. 70° (H- and E-plane)
SWR	\leq 1.5 f.res.
MAX. POWER	50 W
MECHANICAL	
CONNECTOR	N-female
COLOUR	Marine white
MATERIALS	Cover: PS Chassis: Aluminium
SIZE (L x W)	Approx. 104 x 104 mm
HEIGHT	Approx. 40 mm
WEIGHT	Approx. 0.2 kg
MOUNTING	For mounting on wall or ceiling \varnothing 4.5 x 10 mm (4 holes)

MOUNTING DETAILS





This curve shows the radiation patterns in the vertical plane.



This curve shows the radiation patterns in the horizontal plane (horizontal coverage).



PROCOM A/S reserve the right to amend specifications without prior notice.

19/11/2008