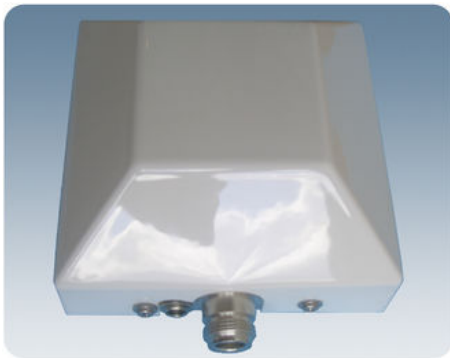


PCPI GPS EXTEND 12V/5V-N

Indoor Right Hand Circular Polarised Patch Antenna for mounting on Wall or Ceiling

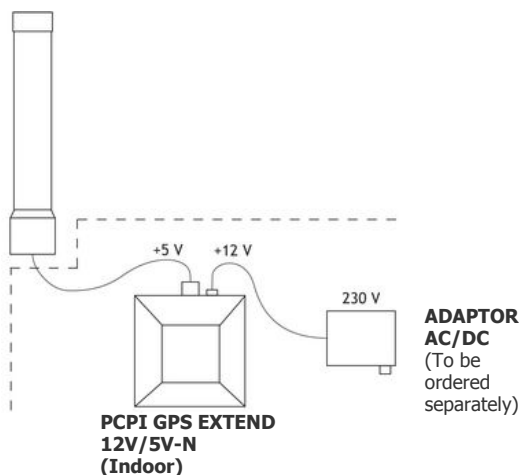
DESCRIPTION

- To be used where GPS-signals are missing. Outdoor GPS antenna is necessary.
- Low profile antenna for reradiating the GPS signal.
- Specially designed for closed rooms.
- Covers the GPS frequency 1575 MHz with a radiation of approx. 5 dBic 3 dBd.
- Full size 2λ circular patch antenna.
- The antenna is carefully sealed with a discreet white cover.
- Internal 25 dB selective amplifier.
- 5V DC output on N-connector for feeding outside GPS antenna with built-in amplifier.
- Recommended outdoor GPS antenna: GPS 4/...



EXAMPLE

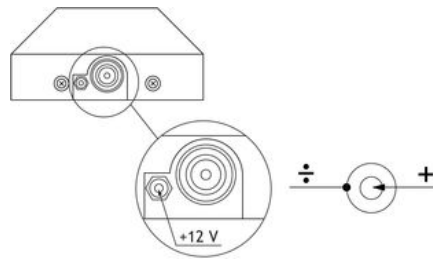
GPS 4/... (Outdoor)
(To be ordered separately)



PLEASE NOTE

GPS 4/... + power supply to be ordered separately.

DETAILS



ORDERING DESIGNATIONS

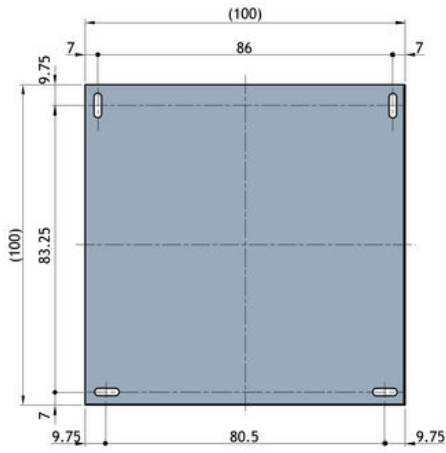
TYPE	SUPPLY VOLTAGE	PRODUCT NO.
PCPI GPS EXTEND 12V/5V-N		102000002
ADAPTOR AC/DC 12V EU		240000040
ADAPTOR AC/DC 12V UK		240000041
GPS 4	5 V DC (4.5 - 5.5 V)	112000017

SPECIFICATIONS

ELECTRICAL	
MODEL	PCPI GPS EXTEND 12V/5V-N
ANTENNA TYPE	Right Hand Circular Polarised patch antenna
FREQUENCY	1575 MHz
IMPEDANCE	Nom. 50 Ω
COVERAGE	10 - 16 m
GAIN	Approx. 5 dBic 3 dBd ± 2 dB
HALF-POWER BEAMWIDTH	Approx. 70° (H- and E-plane)
SWR	≤ 1.5 f.res.
SUPPLY VOLTAGE	12V with 5V out for GPS outdoor antenna
SUPPLY CURRENT	Approx. 150 mA
MECHANICAL	
CONNECTOR	N-female
DC-CONNECTOR	$\varnothing 2.5$ mm - center pin
COLOUR	Marine white
MATERIALS	Cover: ABS Chassis: Aluminium
SIZE (L x W)	104 x 104 mm
HEIGHT	40 mm
WEIGHT	Approx. 0.2 kg
MOUNTING	For mounting on wall or ceiling $\varnothing 4.5$ x 10 mm (4 holes)

MOUNTING DETAILS

(Dimensions excl. cover)



PROCOM A/S reserve the right to amend specifications without prior notice.

22/10/2009