

R 2-8/..., R 2-10/...

Directional Antennas with 8 and 10 dBd Gain for the 160 MHz Band

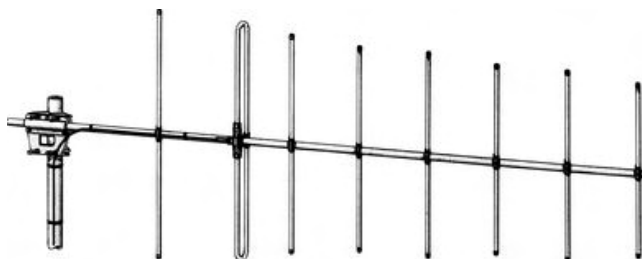
DESCRIPTION

- These antennas are 6- and 8-element Yagi antennas with 8 and 10 dBd gain, respectively.
- When mounted for vertical polarisation the horizontal coverage is R 2-8: 64° and R 2-10: 50°.
- R 2-8/... and R 2-10/... cover the 160 MHz band in two models.
- These Yagis incorporate baluns optimized for wide bandwidth and accurate matching.
- The entire balun unit and feeder cable inlet are completely sealed in a polythene moulding ensuring permanent waterproof connections. The antennas are supplied with a 3 m "tail" of RG 213 terminated with an N-female connector.
- Radiating elements, supporting booms and adjoining metal castings have been constructed in high quality aluminium alloys to prevent corrosion. All metal parts are DC-grounded.
- The antennas are designed for back mounting and are provided with rear extended booms.
- These antennas can be stacked and fed in phase with a matching harness for increased gain.
- A mast clamp for fixation on 30 - 58 mm diameter mast tube is enclosed.

R 2-8/...



R 2-10/...



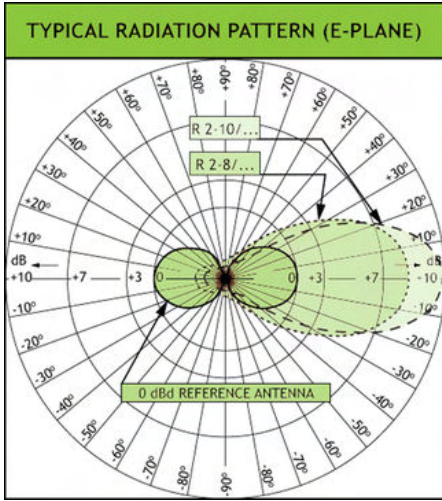
ORDERING DESIGNATIONS

FREQUENCY	TYPE	PRODUCT NO.	TYPE	PRODUCT NO.
		6-element Yagi 8 dBd	8-element Yagi 10 dBd	
140 - 155 MHz	R 2-8/l	120000033	-	
145 - 165 MHz	-		R 2-10/l	120000036
155 - 175 MHz	R 2-8/h	120000034	R 2-10/h	120000037

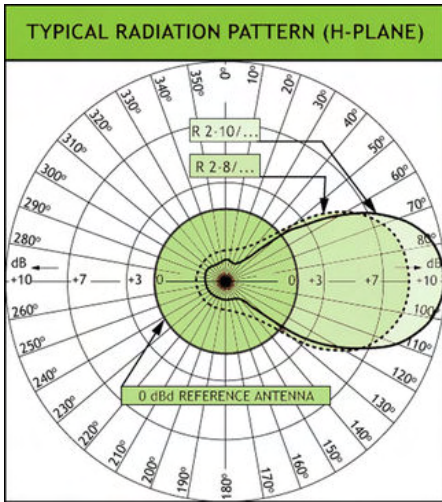
SPECIFICATIONS

ELECTRICAL		
MODEL	R 2-8/...	R 2-10/...
ANTENNA TYPE	6-element Yagi	10-element Yagi
FREQUENCY	"l": 140 - 155 MHz "h": 155 - 175 MHz	"l": 145 - 165 MHz "h": 155 - 175 MHz
IMPEDANCE	Nom. 50 Ω	
POLARISATION	Vertical or horizontal	
GAIN	10 dBi 8 dBd	12 dBi 10 dBd
FRONT TO BACK RATIO	16 dBd	20 dBd
HALF-POWER BEAMWIDTH	E-plane: 50° H-plane: 64°	E-plane: 40° H-plane: 50°
BAND WIDTH	20 MHz	
SWR	≤ 1.5	
MAX. POWER	150 W	
ANTISTATIC PROTECTION	All metal parts DC-grounded (Connector shows a DC-short)	
MECHANICAL		
TEMP. RANGE	-25°C → +60°C	
CONNECTION	3 m tail of RG 213 terminated with type "N" female connector	
WIND SURFACE	0.139 m ²	0.15 m ²
WIND LOAD	176 N @ 160 km/h	190 N @ 160 km/h
COLOUR	"Aluminium"	
MATERIALS	Elements/Boom/Saddle clamps: Aluminium alloys. Fittings: Stainless steel	
BOOM LENGTH	Approx. 2.7 m	Approx. 3.4 m
BOOM DIA.	31.8 mm	
MAX. ELEMENT LENGTH	Approx. 1.06 m	
DIA. OF ELEMENTS	19 mm	
WEIGHT	Approx. 4.8 kg	Approx. 5.2 kg
MOUNTING	Supplied with mast bracket suiting 30-58 mm dia. mast tube	

TYPICAL RADIATION PATTERN



If the antennas are mounted for vertical polarisation these curves show the radiation patterns in the vertical plane.



If the antennas are mounted for vertical polarisation these curves show the radiation patterns in the horizontal plane (horizontal coverage).



PROCOM A/S reserve the right to amend specifications without prior notice.

23/06/2009