

CXL 2-2C

Unity Gain, Broad-Banded Base Station Antenna for the 160 MHz Band



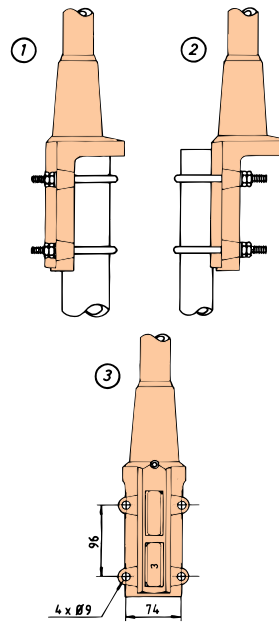
DESCRIPTION:

- ★ CXL 2-2C is a 0 dBd gain, omnidirectional base station antenna.
- ★ The antenna covers the complete band: 144-175 MHz.
- ★ CXL 2-2C is designed for fixation on supporting tubes with outer diameter between 27 mm and 65 mm.
- ★ The construction of the mount makes it possible to lead the cable either inside or along the outside of the mast tube.
- ★ A glassfiber tube completely encloses the carefully designed radiating element to ensure long dependable service in all climates.
- ★ Atmospherical discharges are immediately led to ground as all metal parts are DC-grounded (consequently, the antenna shows a DC-short across the coaxial cable).
- ★ This antenna is used where reliability is of utmost importance. A long lifetime has been taken into consideration when designing this antenna – it is sturdy and strong.

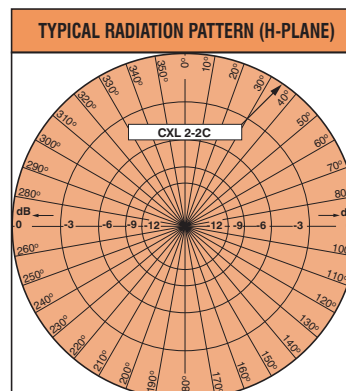
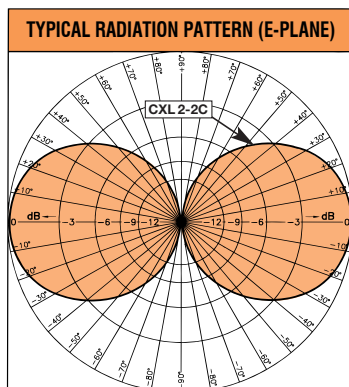
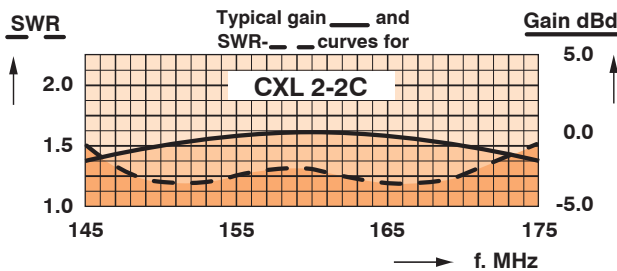
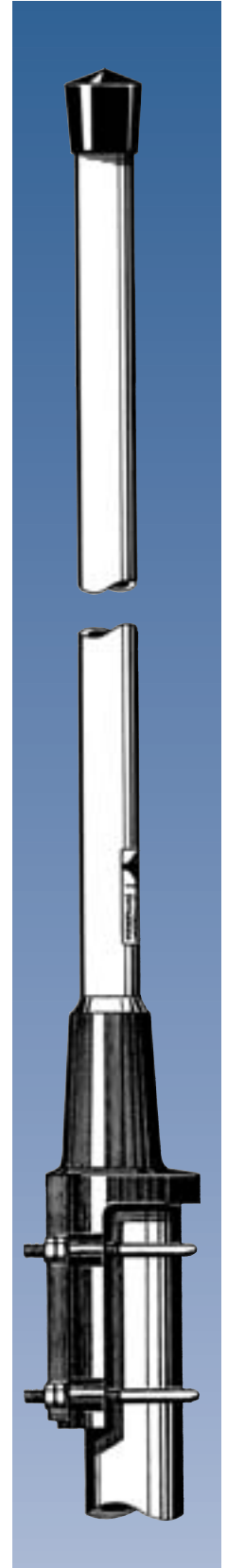
SPECIFICATIONS:

ELECTRICAL	
MODEL	CXL 2-2C
ANTENNA TYPE	Coaxial, broad-band dipole
FREQUENCY	Covering: 144-175 MHz
IMPEDANCE	Nom. 50 Ω
RADIATION	Omnidirectional
POLARISATION	Vertical
GAIN	2 dBi 0 dBd
BAND WIDTH	31 MHz
SWR	< 1.5
MAX. POWER	600 watts
ANTISTATIC PROTECTION	All metal parts DC-grounded (Connector shows a DC-short)
MECHANICAL	
CONNECTOR	N-female
WIND SURFACE	0.091 m ²
WIND LOAD	115 N @ 160 km/h
COLOUR	Marine white
MATERIALS	Radome : Polyurethane coated fiberglass Mounting bracket: Seawater resistant aluminium, epoxy-coated
TOTAL HEIGHT	Approx. 1.75 m
WEIGHT	Approx. 3.0 kg
MOUNTING	On 27-65 mm dia. mast tube

MULTI-PURPOSE MOUNTING BRACKET:



- ① Mast tube D_j , min. = 32 mm
Mast tube D_o , max. = 65 mm
- ② Mast tube D_o , max. = 42 mm
Mast tube D_o , min. = 27 mm



PROCOM A/S reserve the right to amend specifications without prior notice.